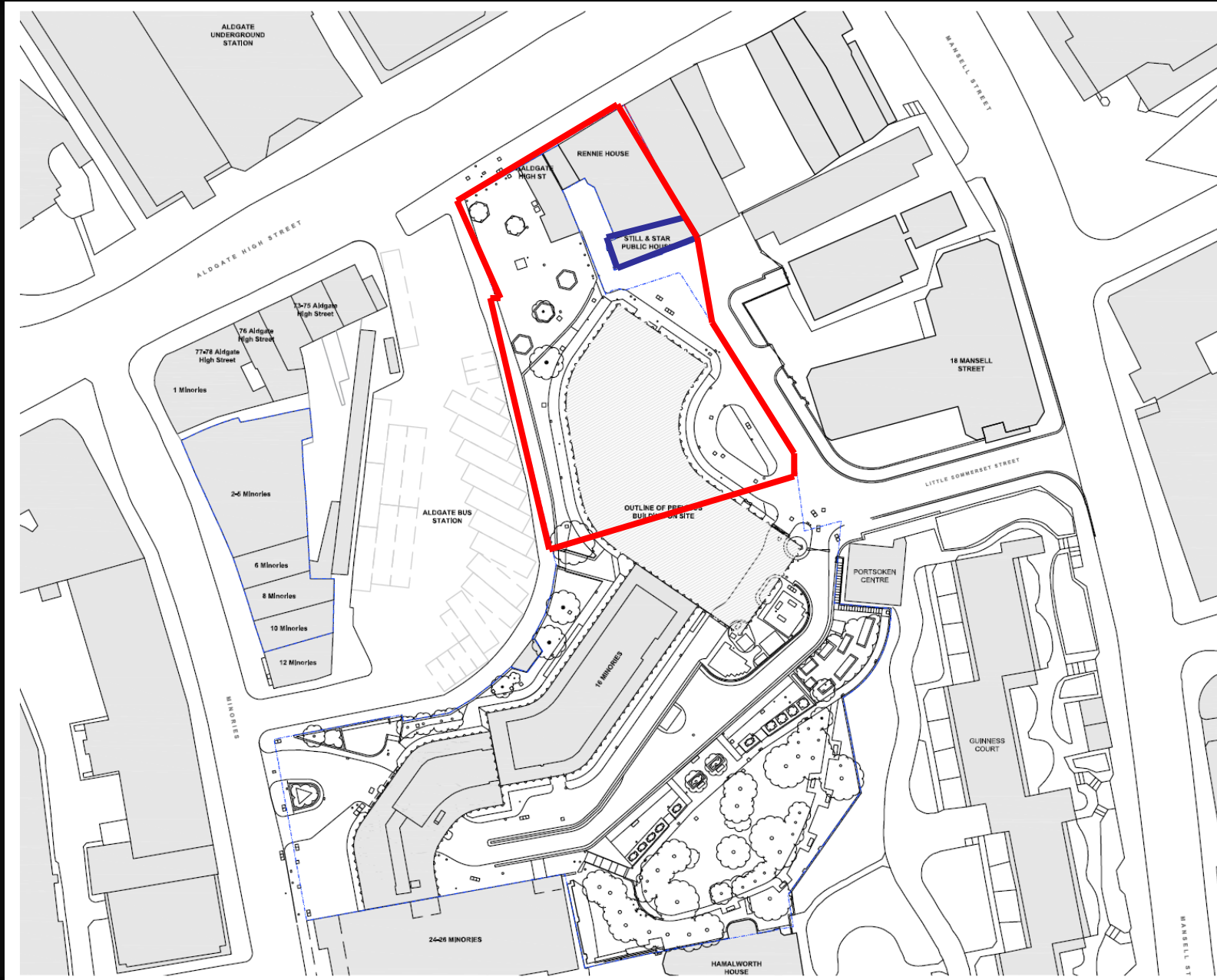


# PLANNING & TRANSPORTATION COMMITTEE

15 December 2020



# 60 Aldgate High Street



Existing site location plan



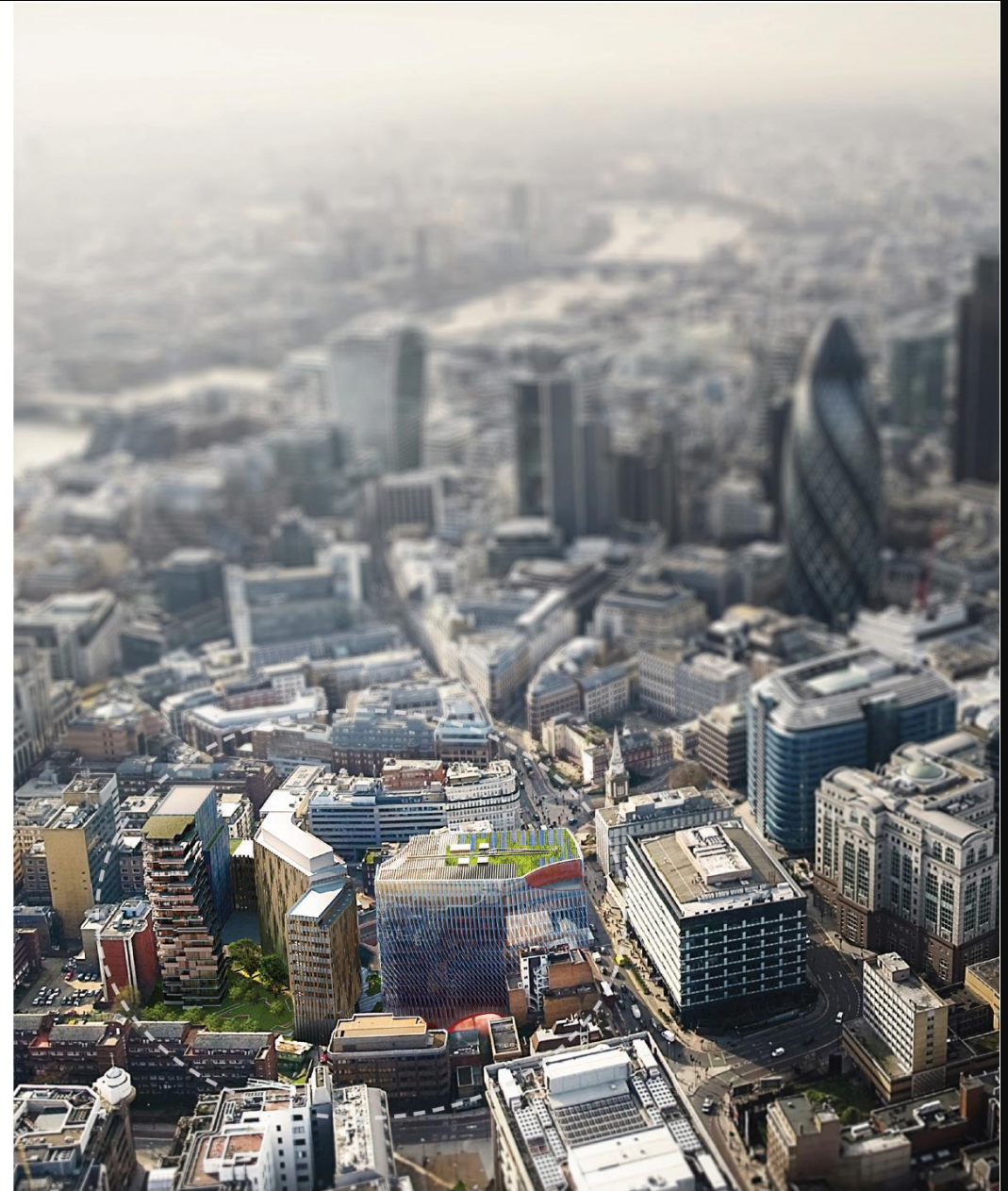
# 60 Aldgate High Street



Proposed site location plan



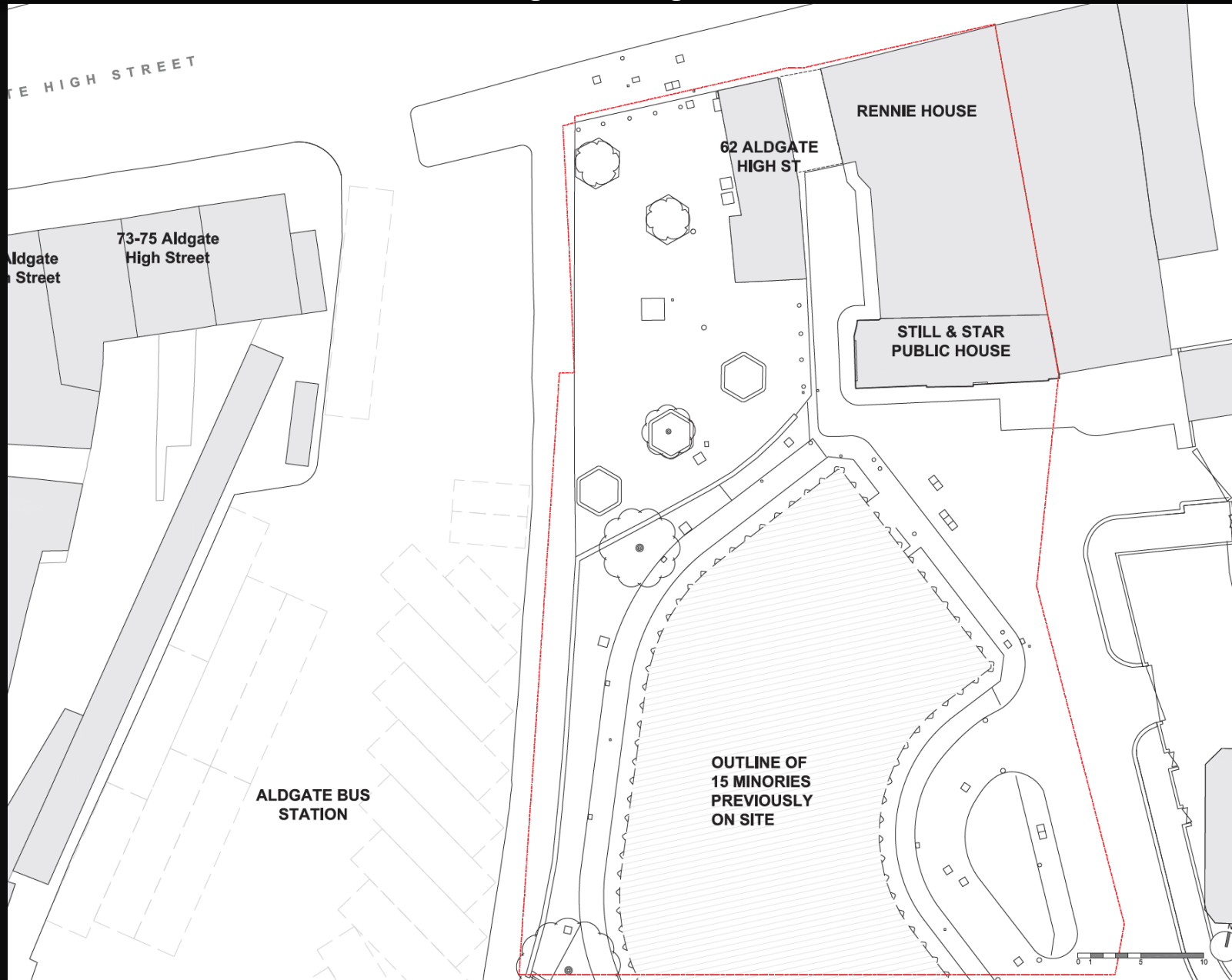
# 60 Aldgate High Street



Existing & proposed aerial view



# 60 Aldgate High Street



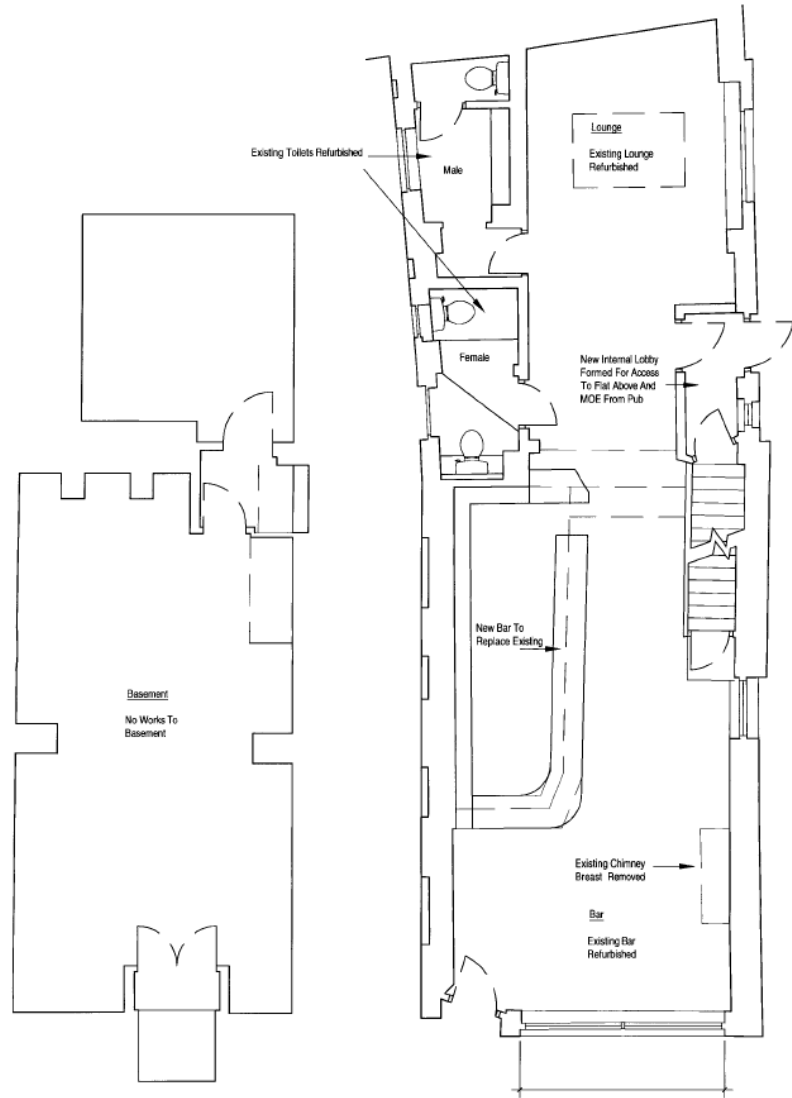
Existing ground floor plan



# 60 Aldgate High Street

BASEMENT

GROUND FLOOR



Existing Still & Star plans

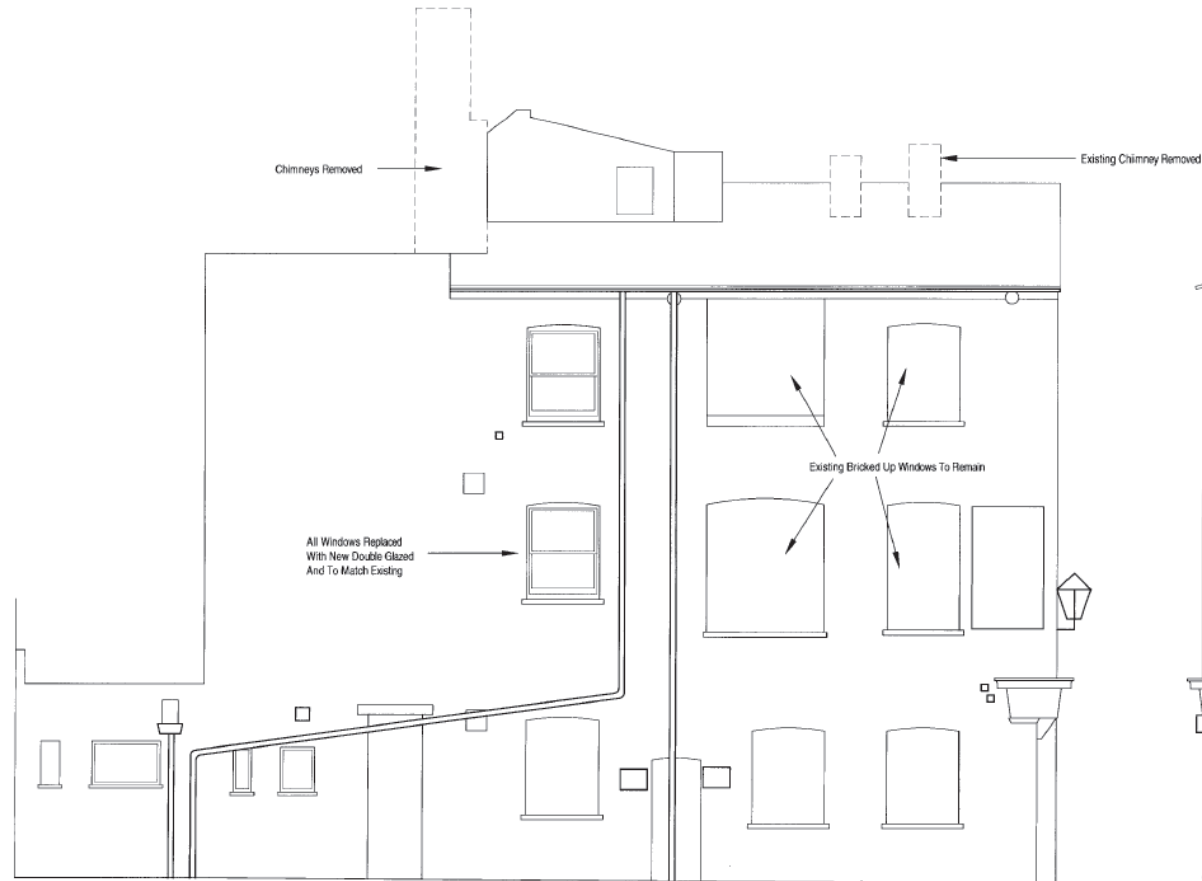


# 60 Aldgate High Street

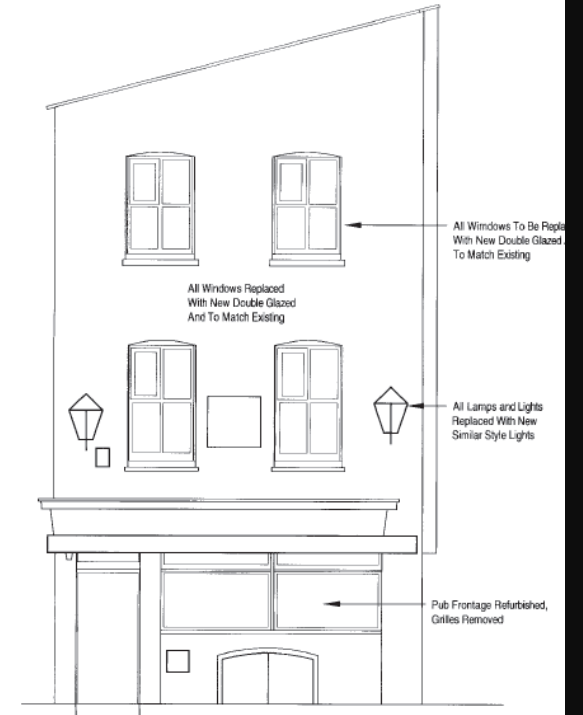
## EAST ELEVATION



## NORTH ELEVATION



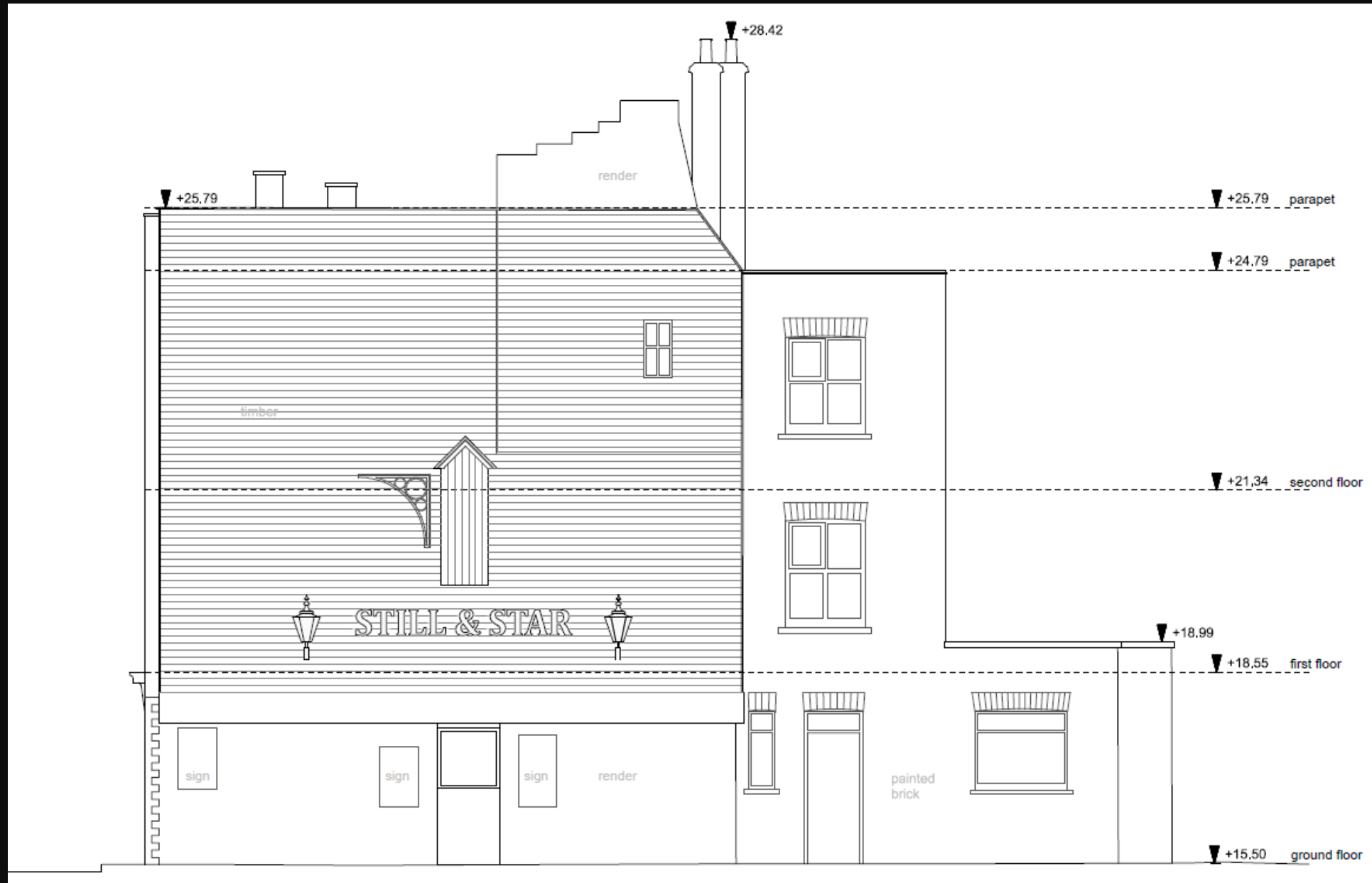
## WEST ELEVATION



Existing Still & Star elevation

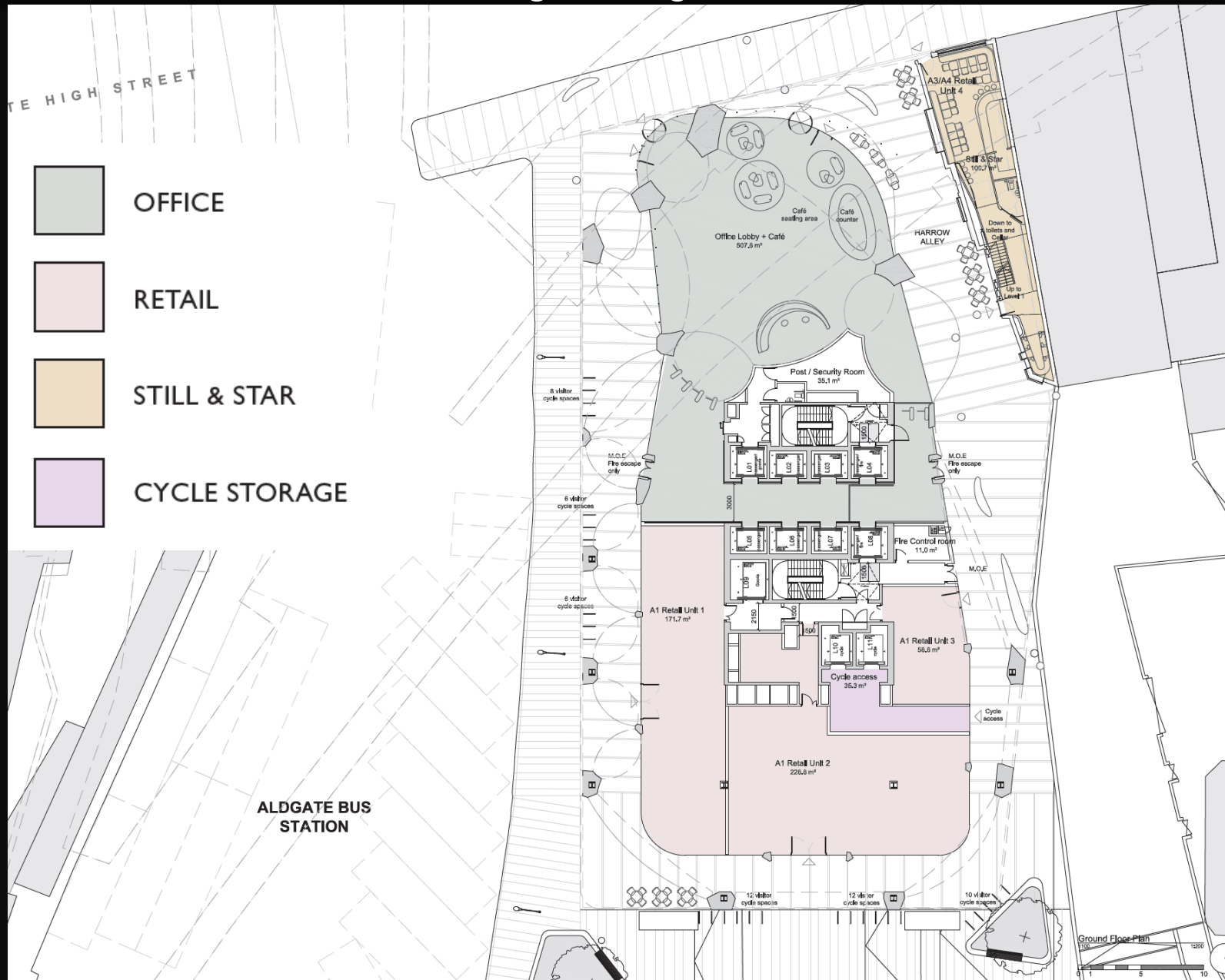


# 60 Aldgate High Street



South elevation

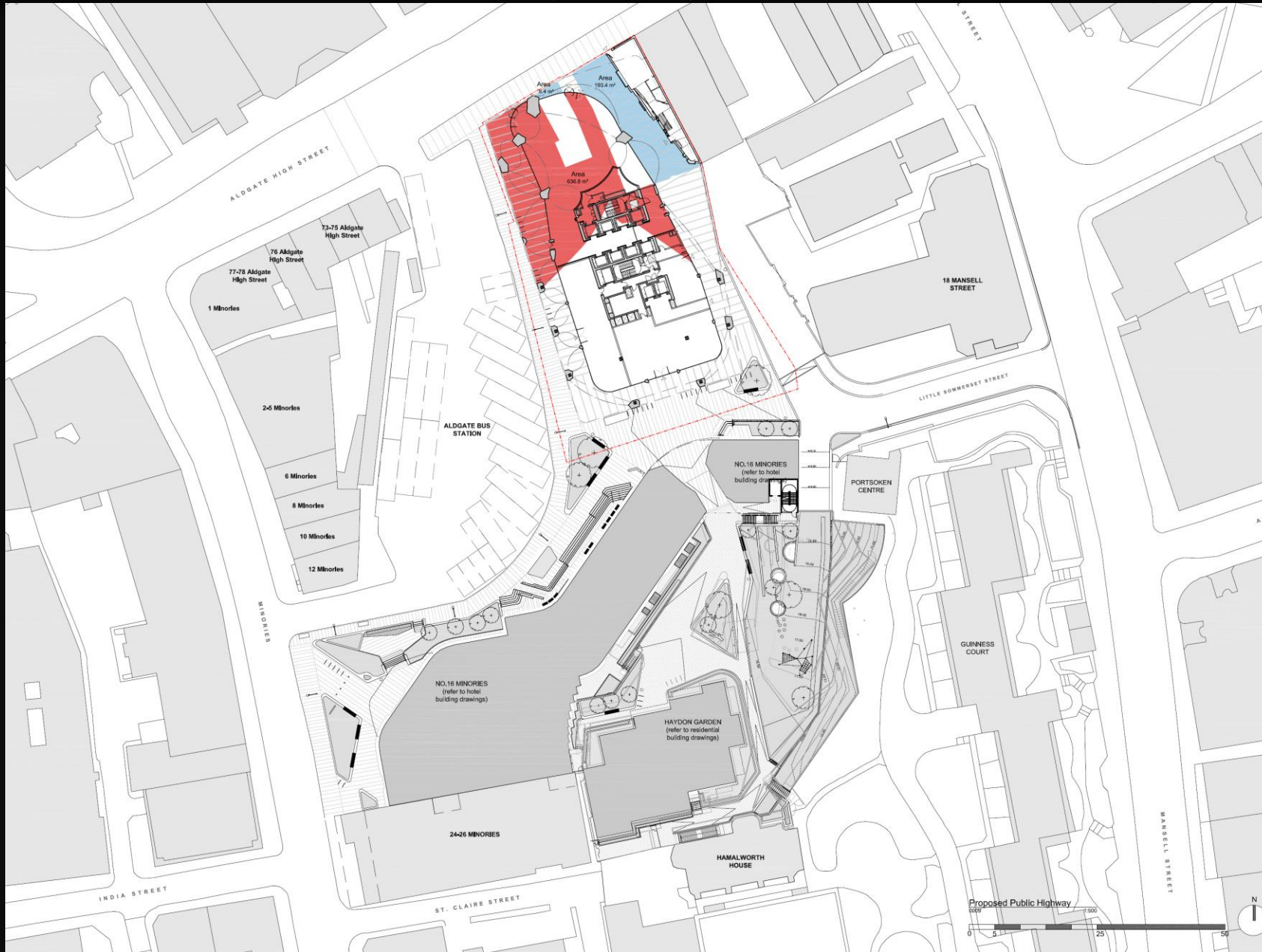
# 60 Aldgate High Street



Proposed ground floor plan



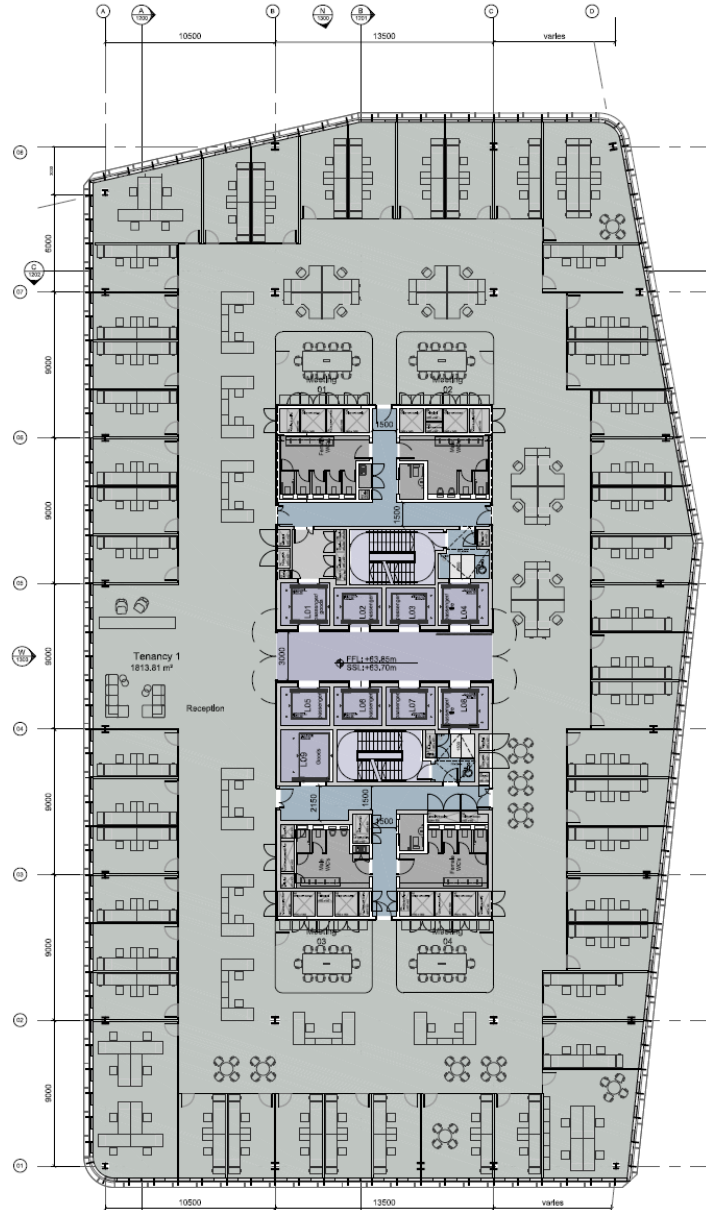
# 60 Aldgate High Street



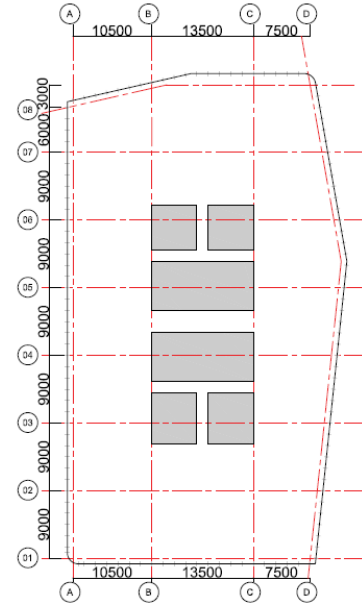
Proposed stopping up - dedication

# 60 Aldgate High Street

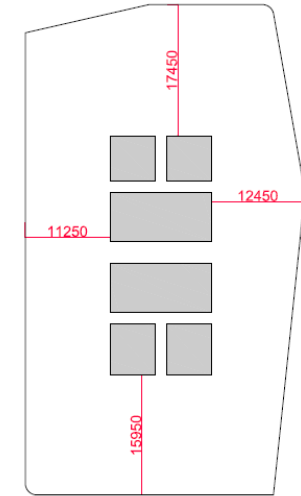
## TYPICAL OFFICE FLOOR



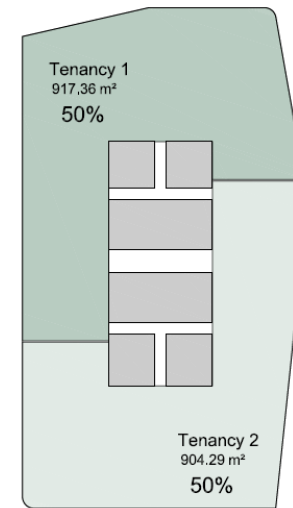
## STRUCTURAL GRID



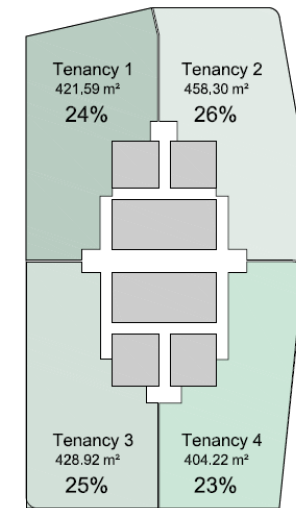
## CORE CENTERED IN FLOOR



## 2X TENANTS



## 4X TENANTS



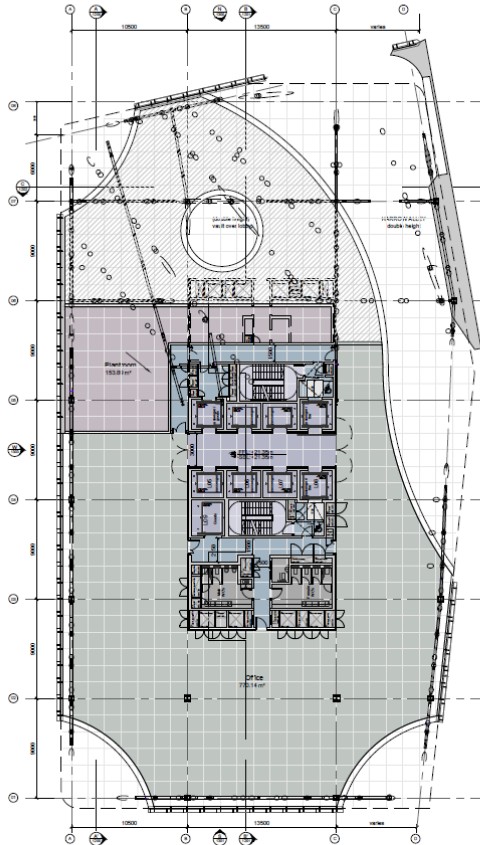
Office levels 1 to 12



# 60 Aldgate High Street

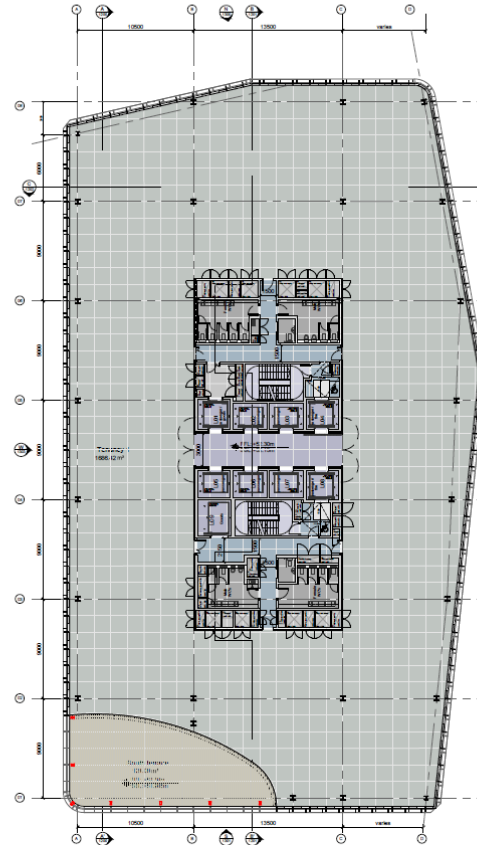
## FIRST FLOOR

This floor allows for a large void space towards the front to allow the double height space of the entrance lobby and arcade over the alley. This floor now accommodates office space as most of the plant areas have been relocated to the basement levels.



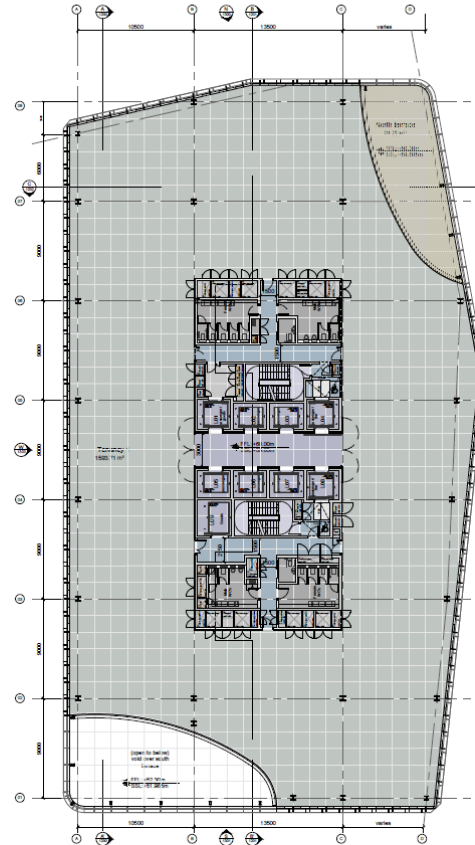
## LEVEL 9

This level accommodates a proposed terrace at the South-western corner with 118 sqm and views towards the City.



## LEVELS 10-11

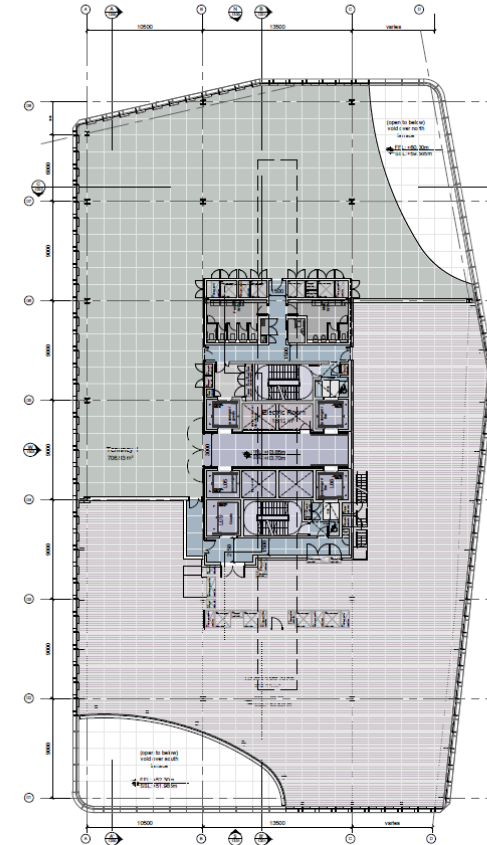
These levels are cut back in the North-eastern part of the building for a generous terrace with approx. 132 sqm.



## LEVELS 12

The upper-most level houses office space towards the North-west and plant areas towards the south-east with air handling units and dry air coolers for all tenants, plus future tenant plant areas.

There will be a 125 sq m area of PV elements over the brown roof. Tracks for a cleaning cradle have been integrated running from north to south above the core.

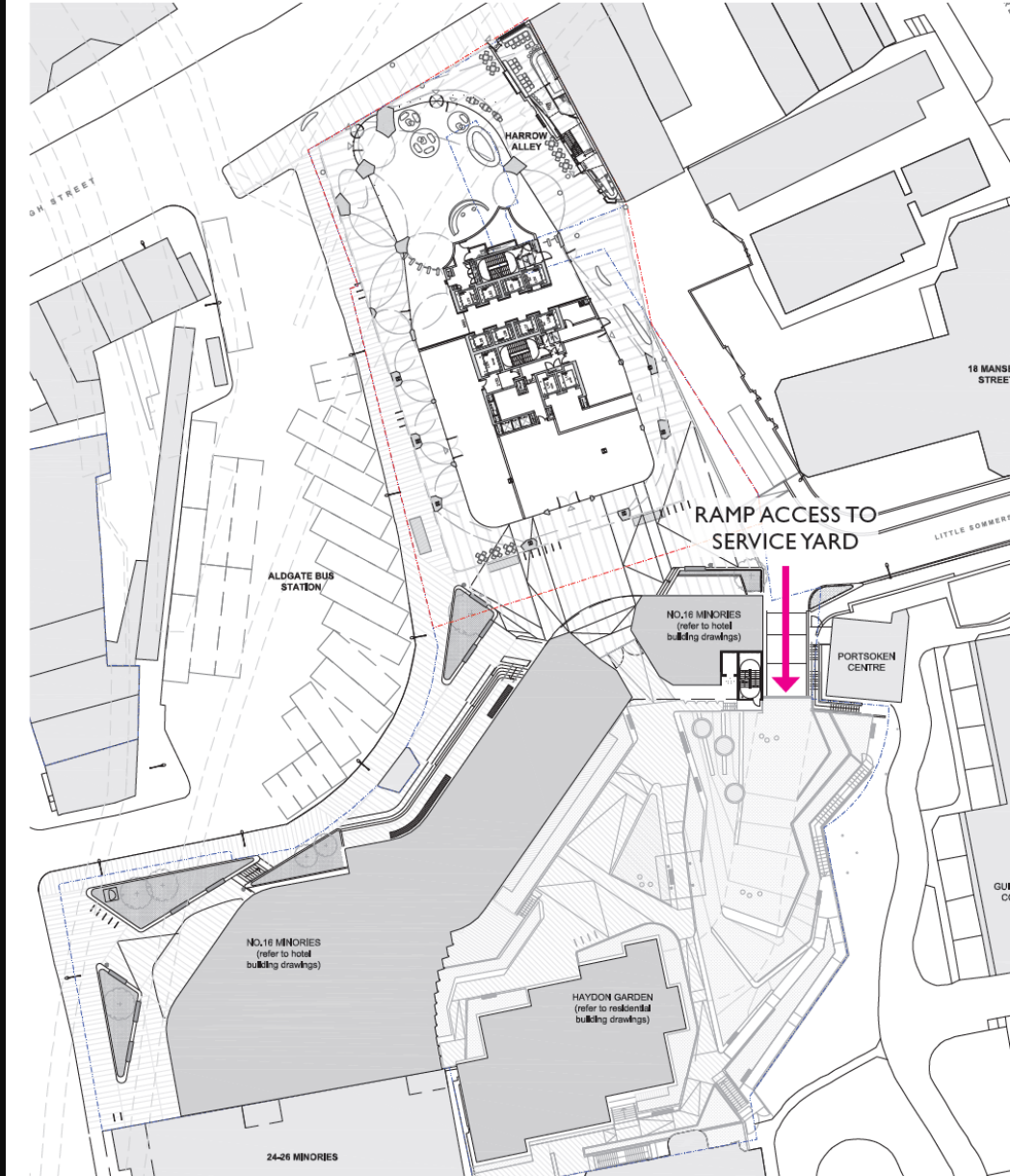


## Roof

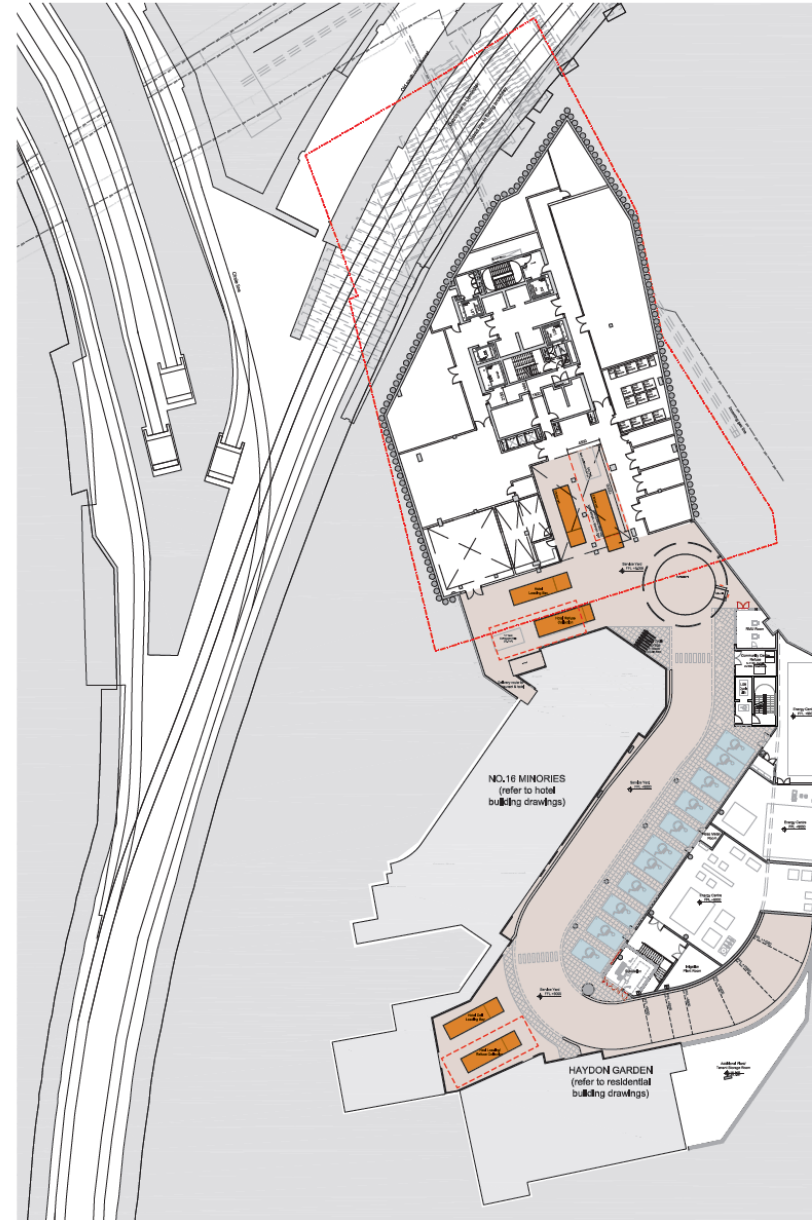


# 60 Aldgate High Street

## RAMP ACCESS FROM GROUND FLOOR

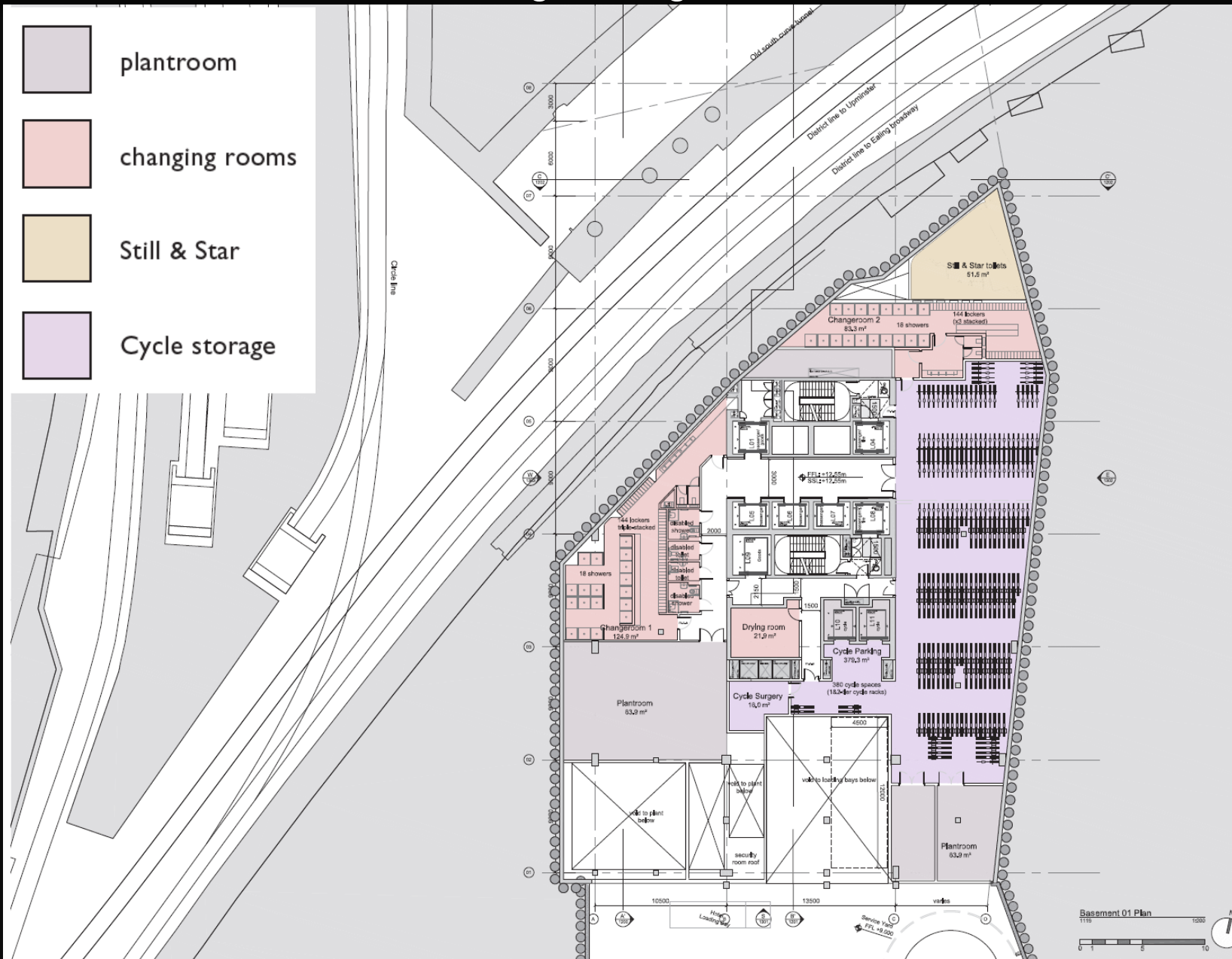


## BASEMENT SERVICE YARD



Site wide basement

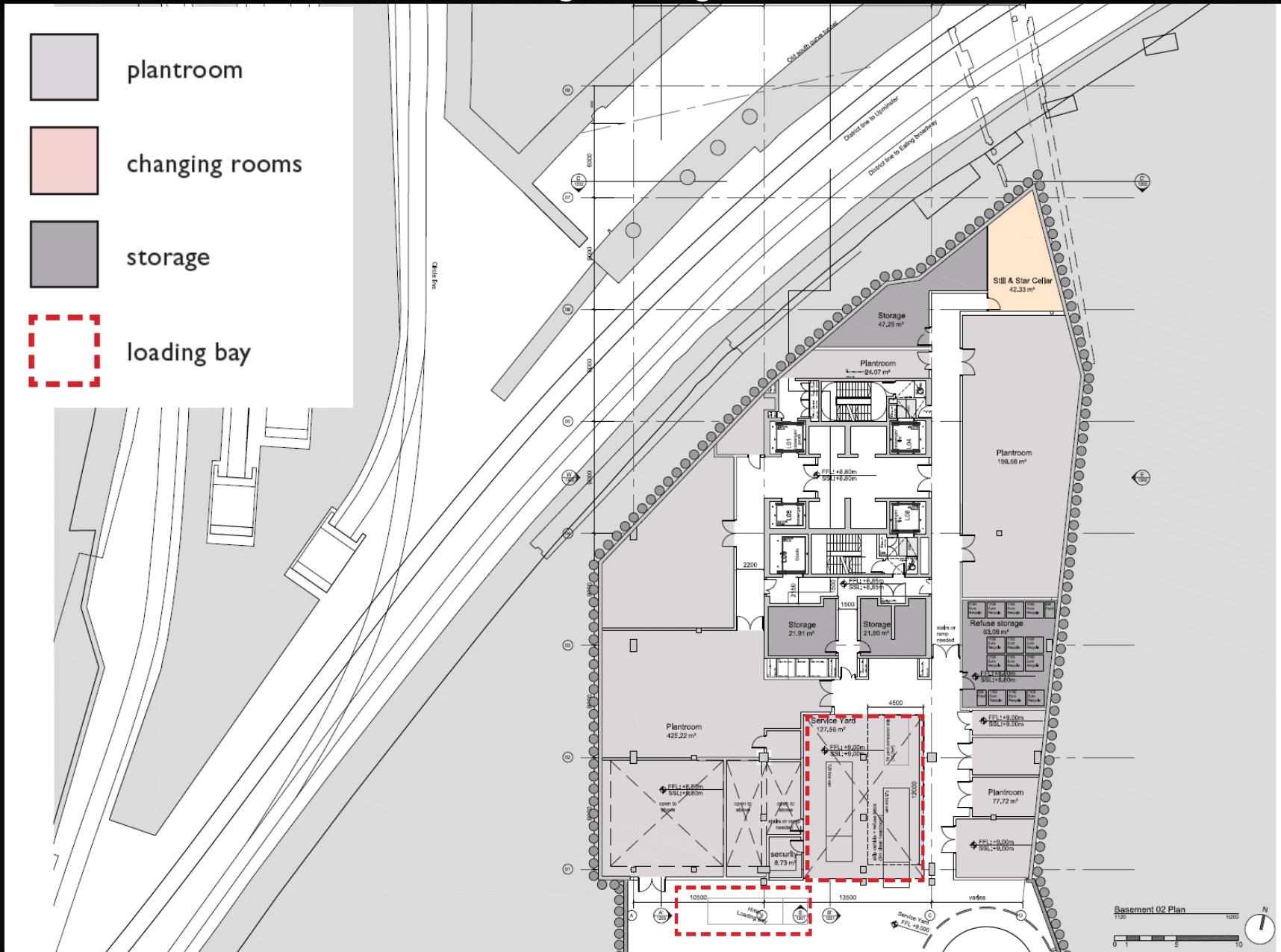
# 60 Aldgate High Street



## Office basement 1

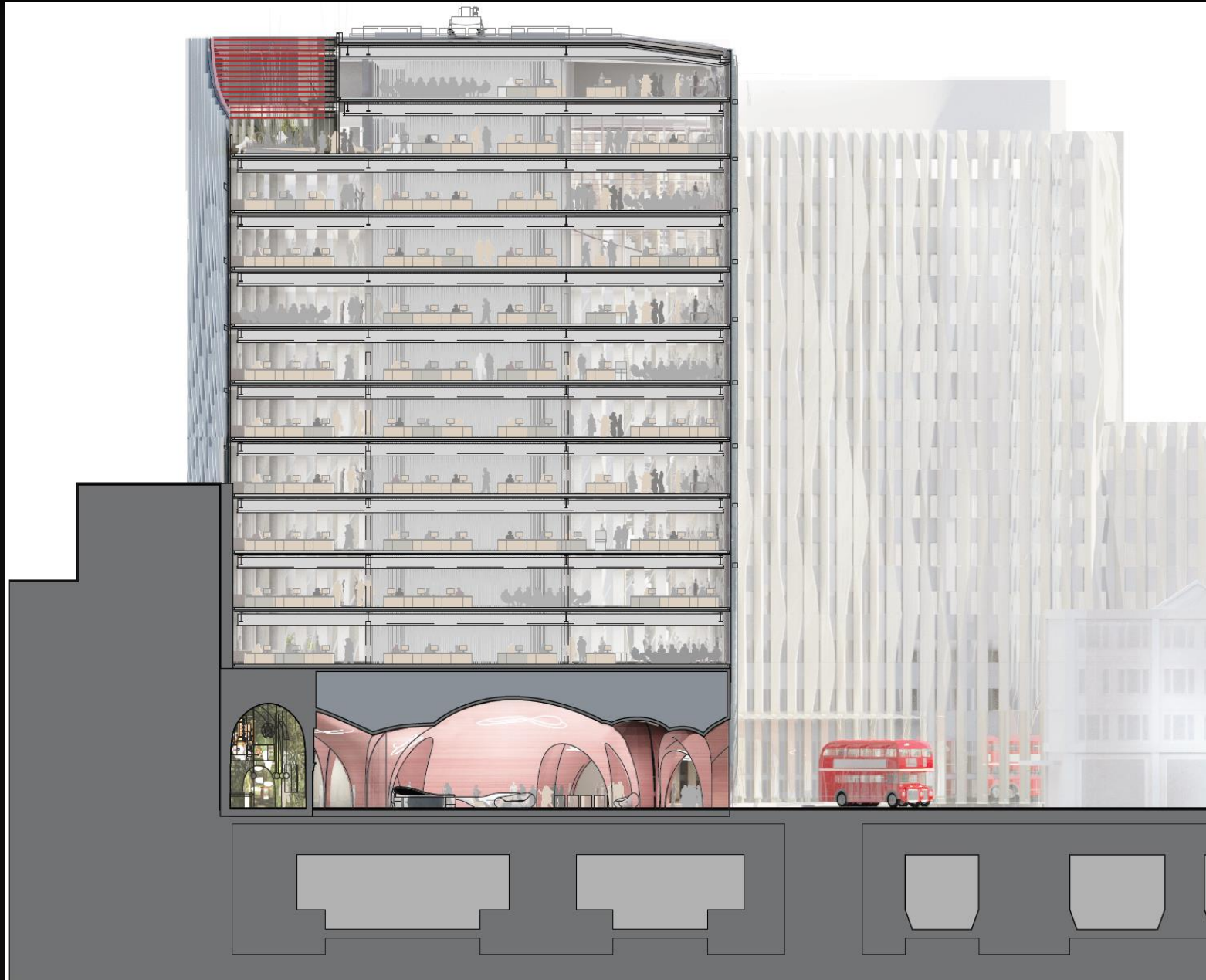


# 60 Aldgate High Street



Office basement 2

# 60 Aldgate High Street



East to west Cross section

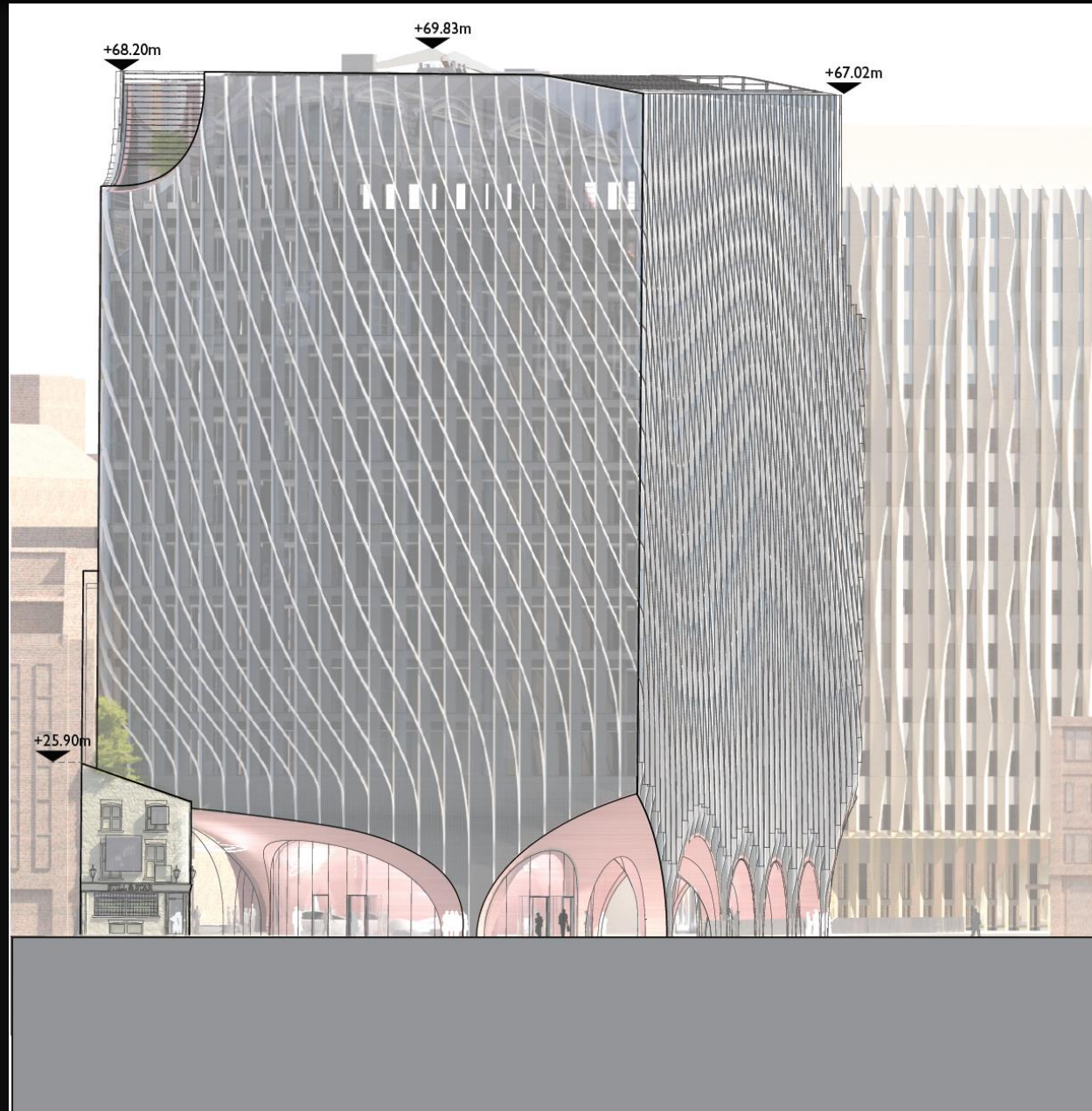


# 60 Aldgate High Street



North to south Long section

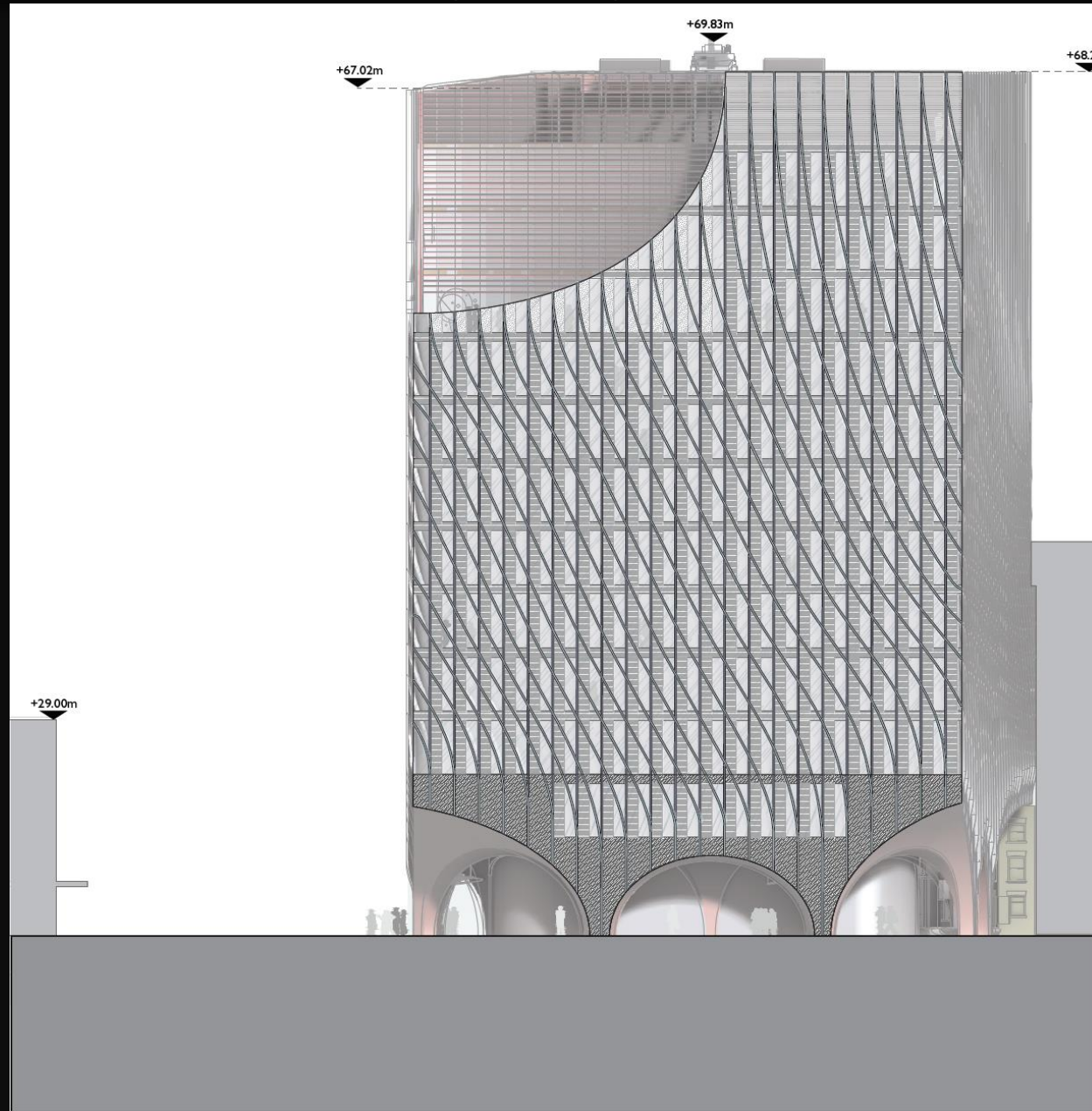
# 60 Aldgate High Street



North elevation



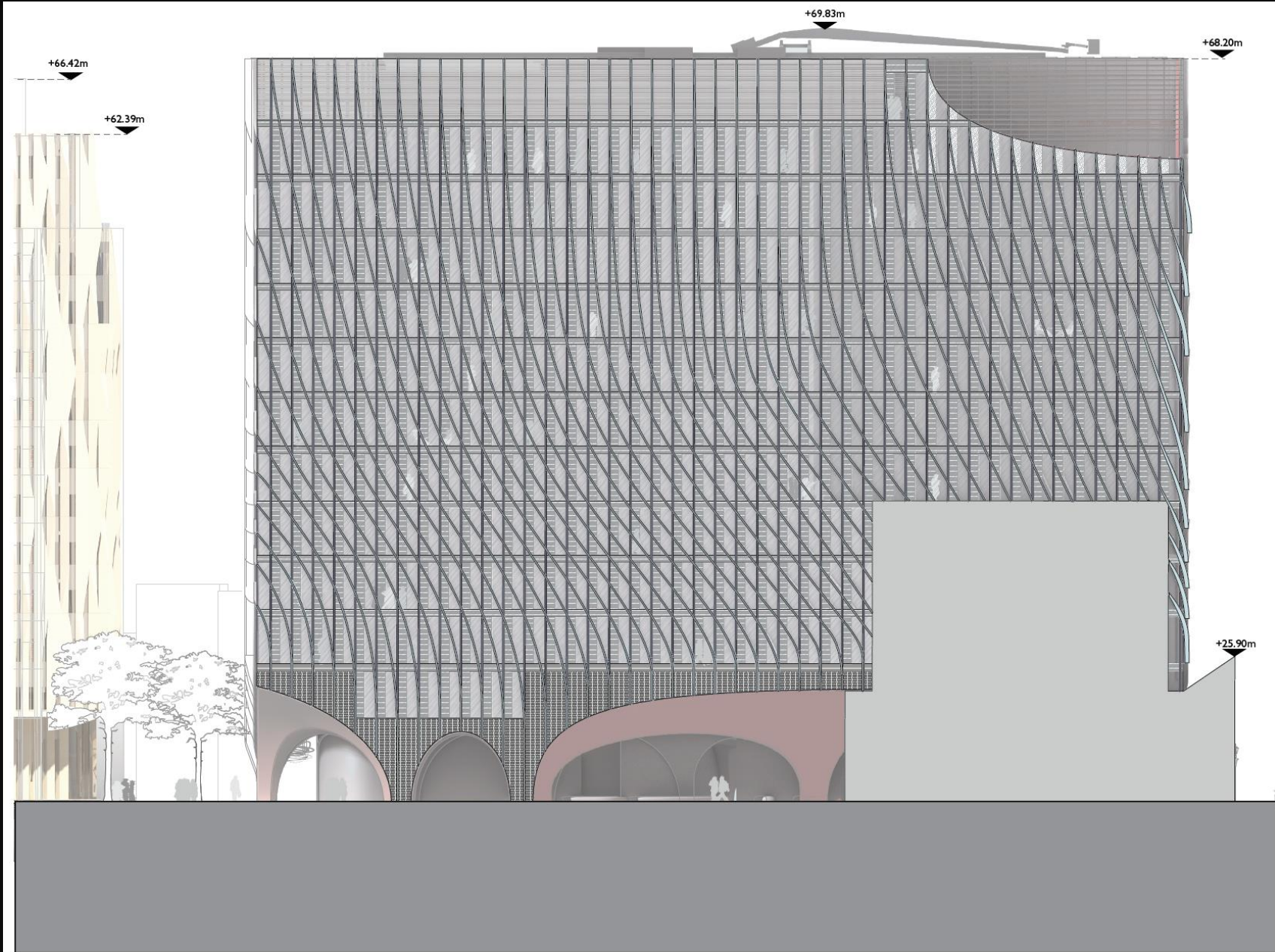
# 60 Aldgate High Street



South elevation

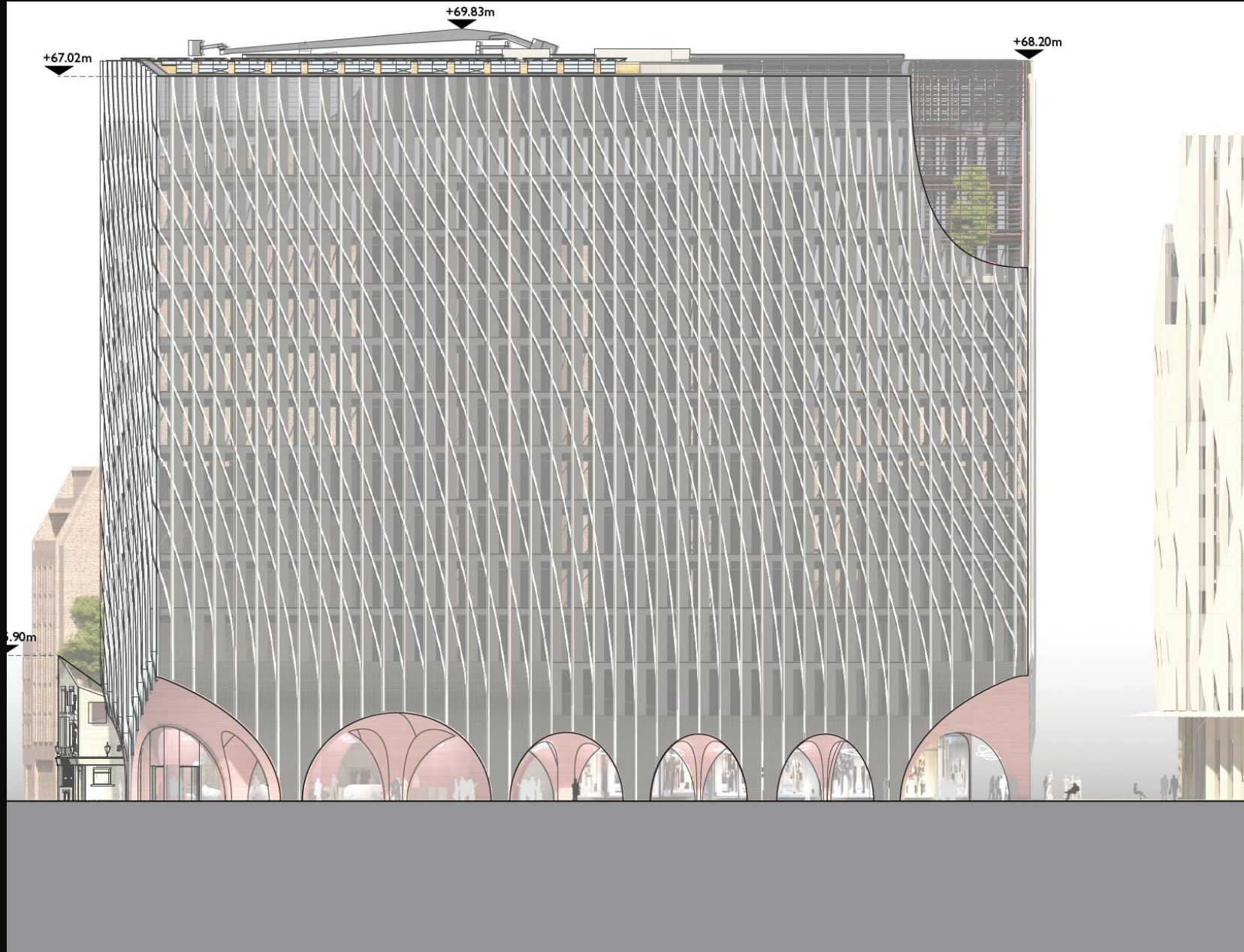


# 60 Aldgate High Street



East elevation

# 60 Aldgate High Street



West elevation



## 60 Aldgate High Street



Existing & proposed LVMF view 25.A City Hall: the public terrace & Queen's Walk



# 60 Aldgate High Street



EXISTING



CONSENTED



PROPOSED



View from Aldgate High Street looking east



# 60 Aldgate High Street



EXISTING



CONSENTED



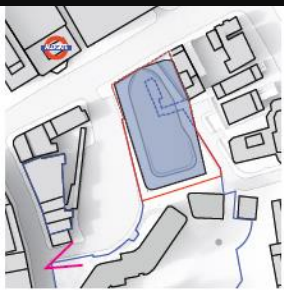
PROPOSED



View from Aldgate High Street looking south



# 60 Aldgate High Street



EXISTING



CONSENTED



PROPOSED



View from Minories looking north



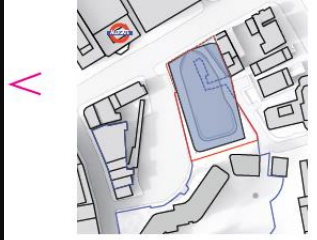
# 60 Aldgate High Street



View from hotel entrance looking north east



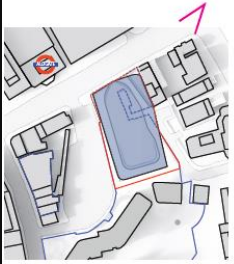
# 60 Aldgate High Street



View from Aldgate Square looking east



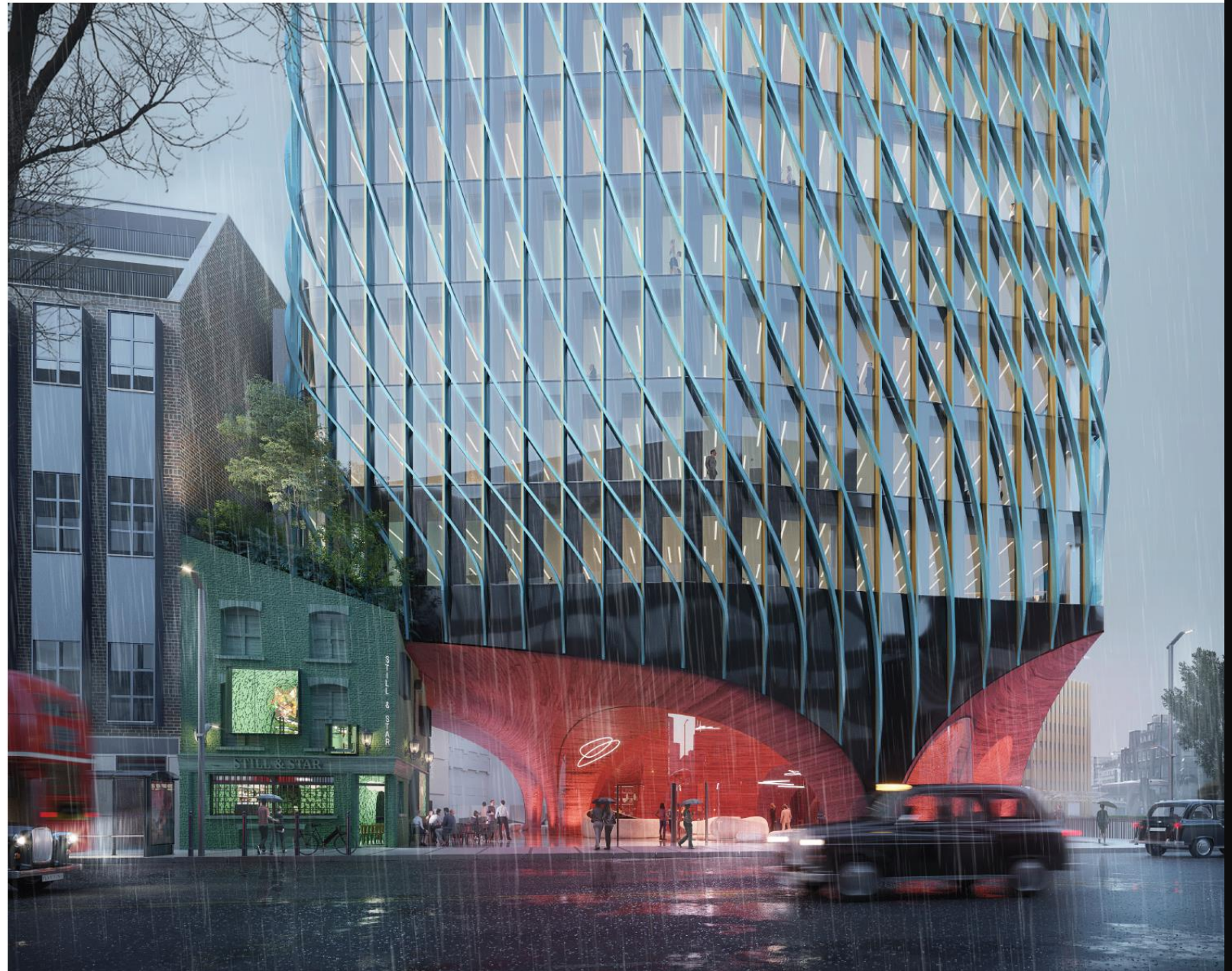
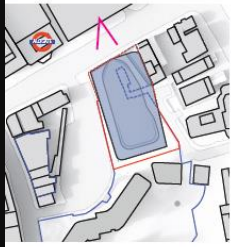
# 60 Aldgate High Street



View from St Botolph Street looking west



# 60 Aldgate High Street



View from Aldgate High Street looking south with Still & Star



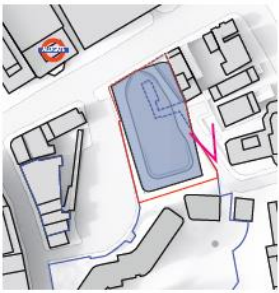
# 60 Aldgate High Street



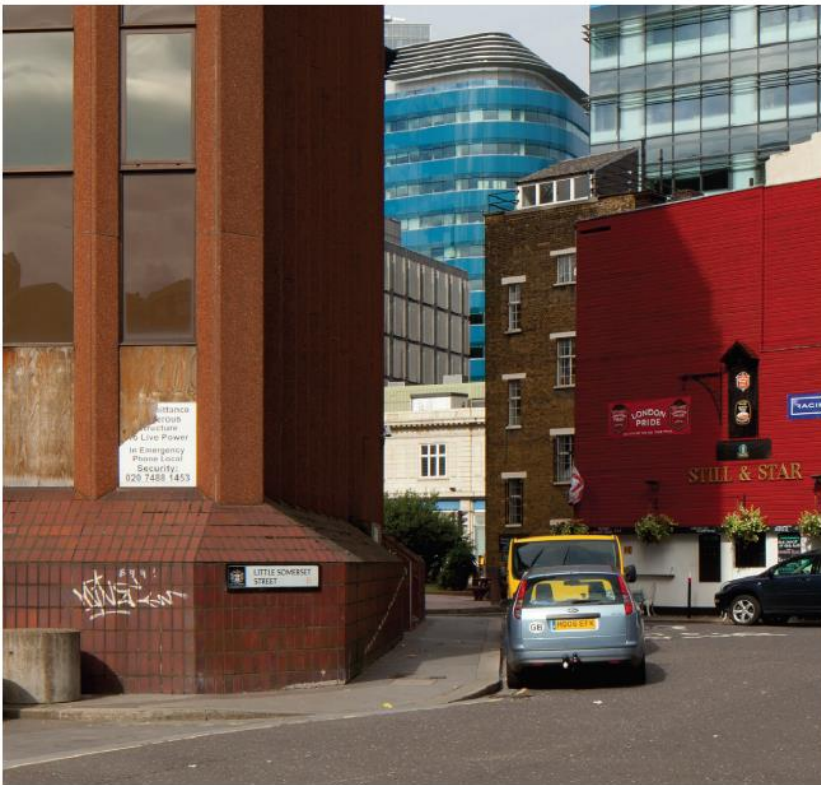
View from Aldgate Station looking south east



# 60 Aldgate High Street



EXISTING



CONSENTED



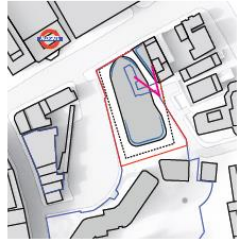
PROPOSED



View from Little Somerset Street



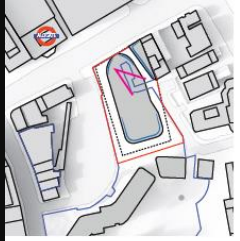
# 60 Aldgate High Street



View from Harrow Valley



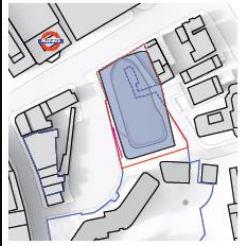
# 60 Aldgate High Street



Interior view from the café & office lobby



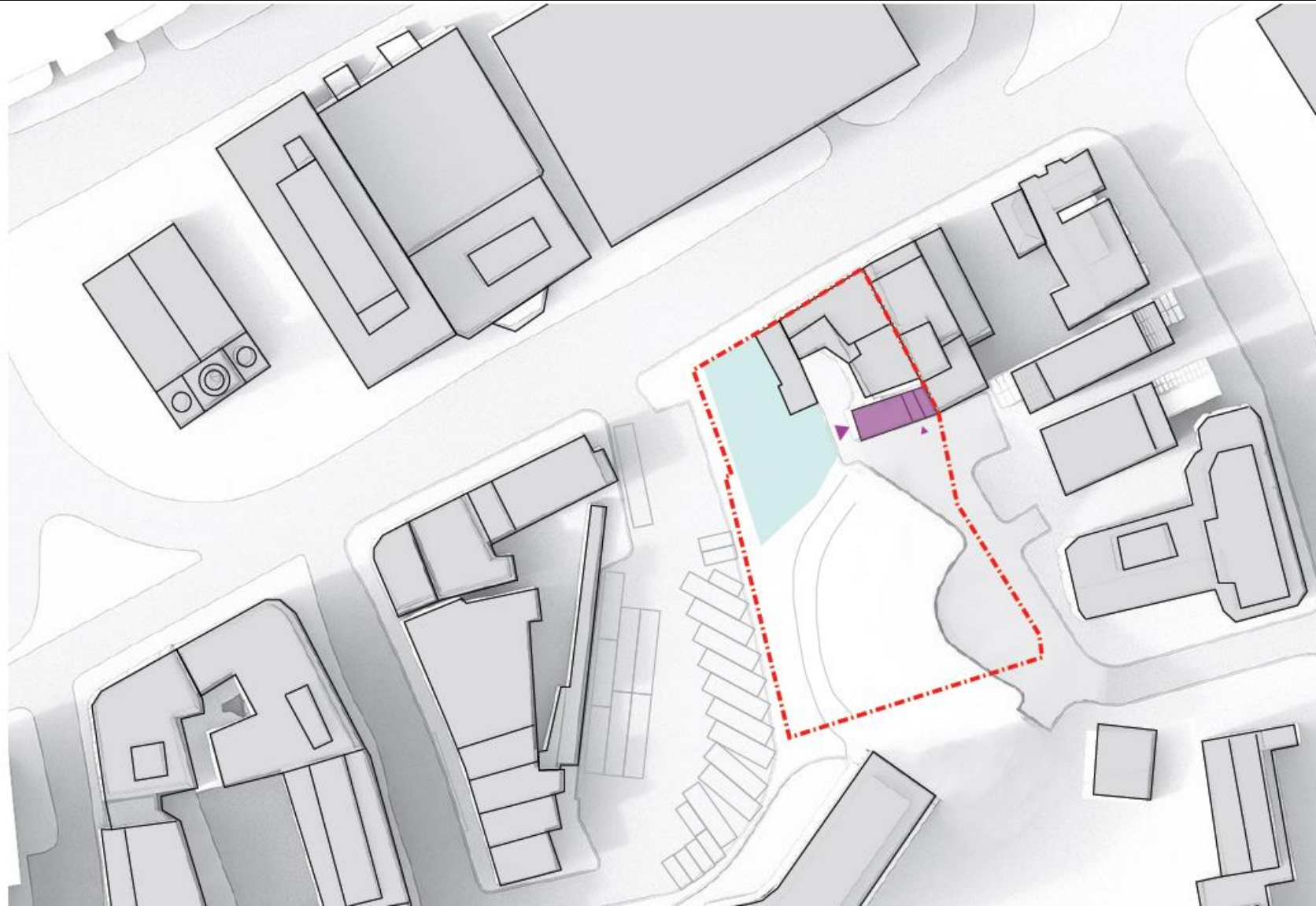
# 60 Aldgate High Street



View towards new south square



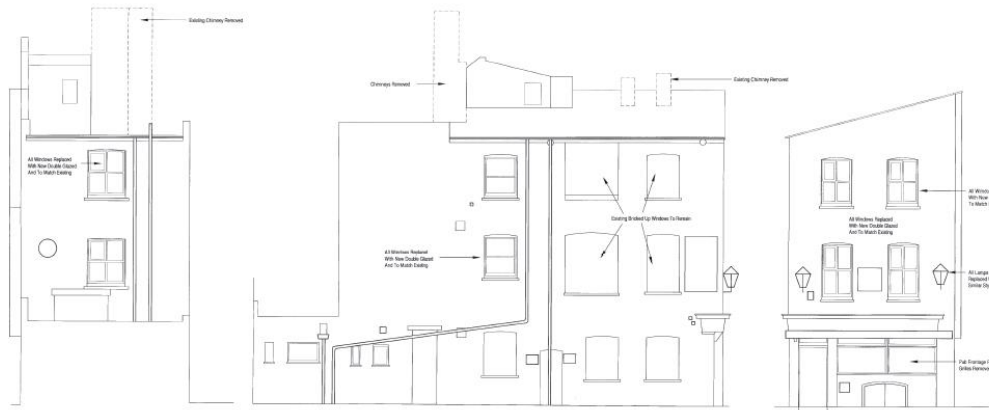
# 60 Aldgate High Street



Existing Still & Star frontage



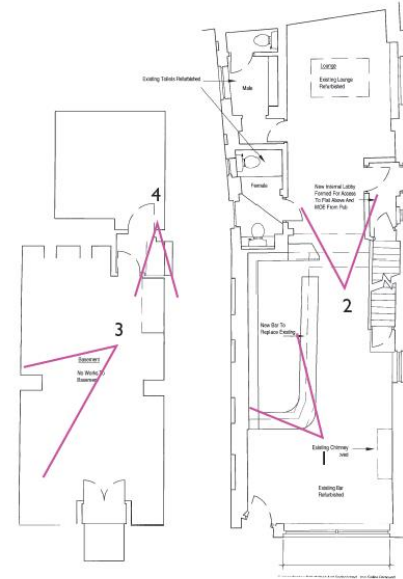
# 60 Aldgate High Street



South elevation

East elevation

West elevation



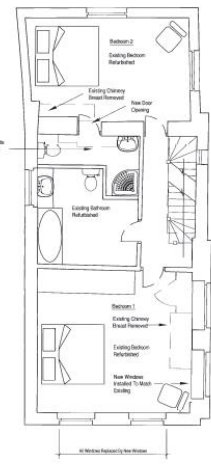
Basement



Ground Floor



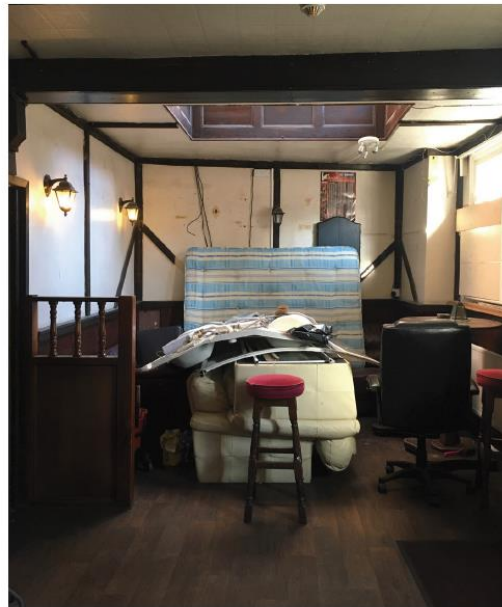
First Floor



Second Floor



View 1 - front room counter



View 2 - Lounge



View 3 - Cellar

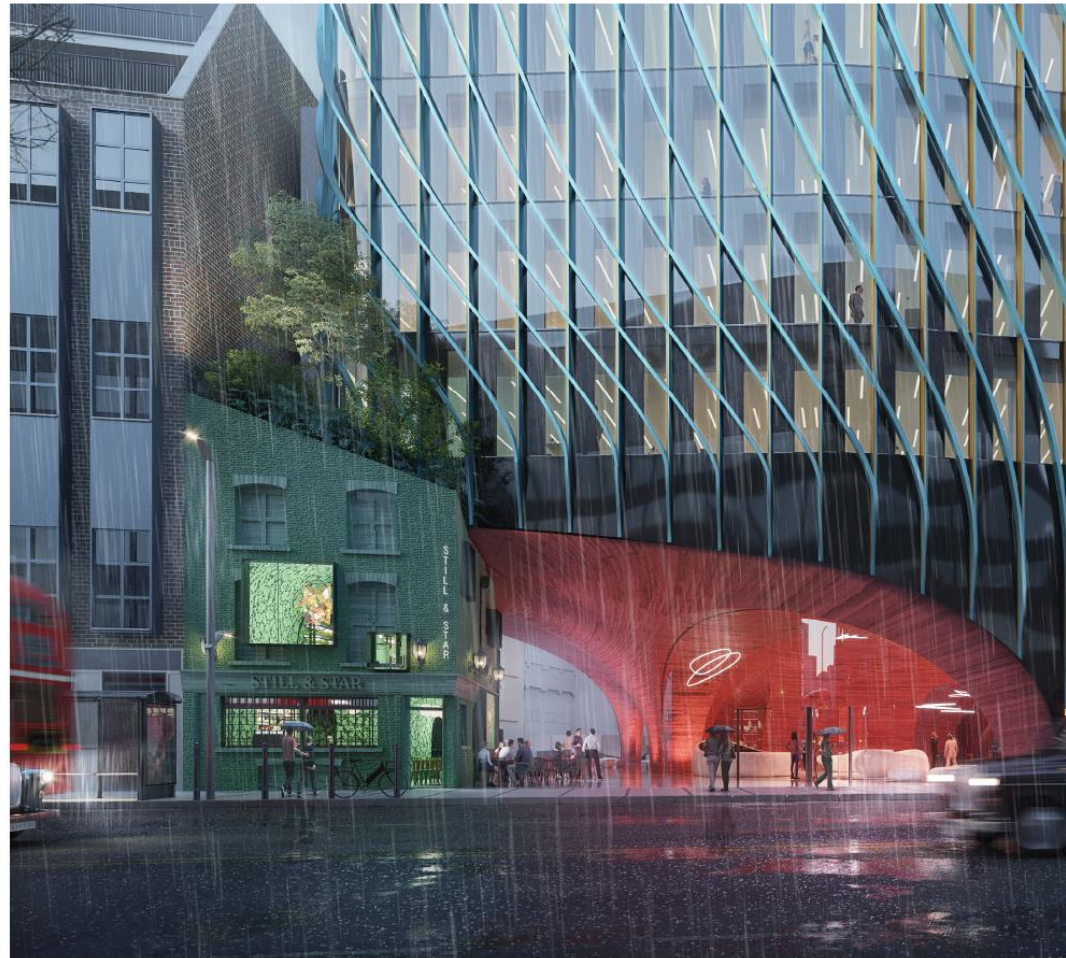


View 4 - Stairs from cellar

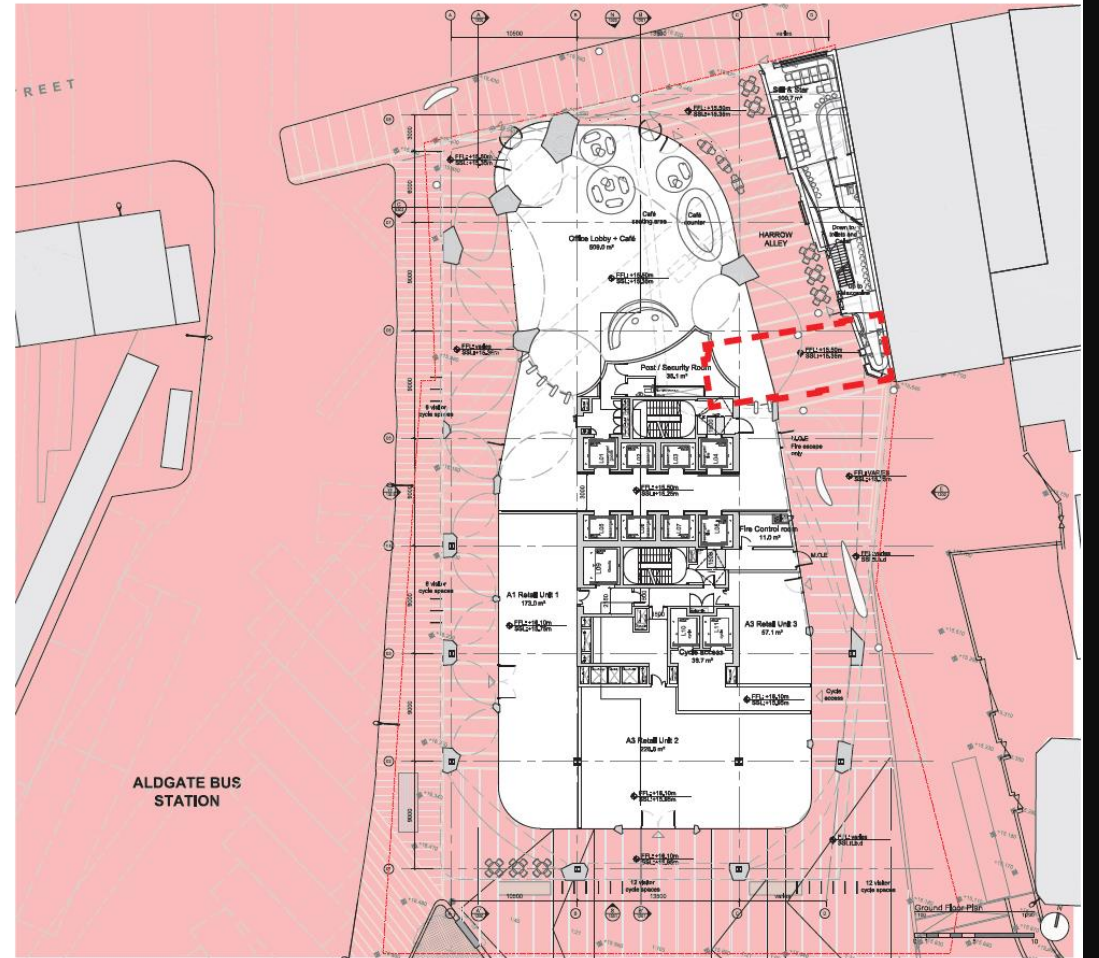
Existing Still & Star interior



# 60 Aldgate High Street



Ground Floor layout

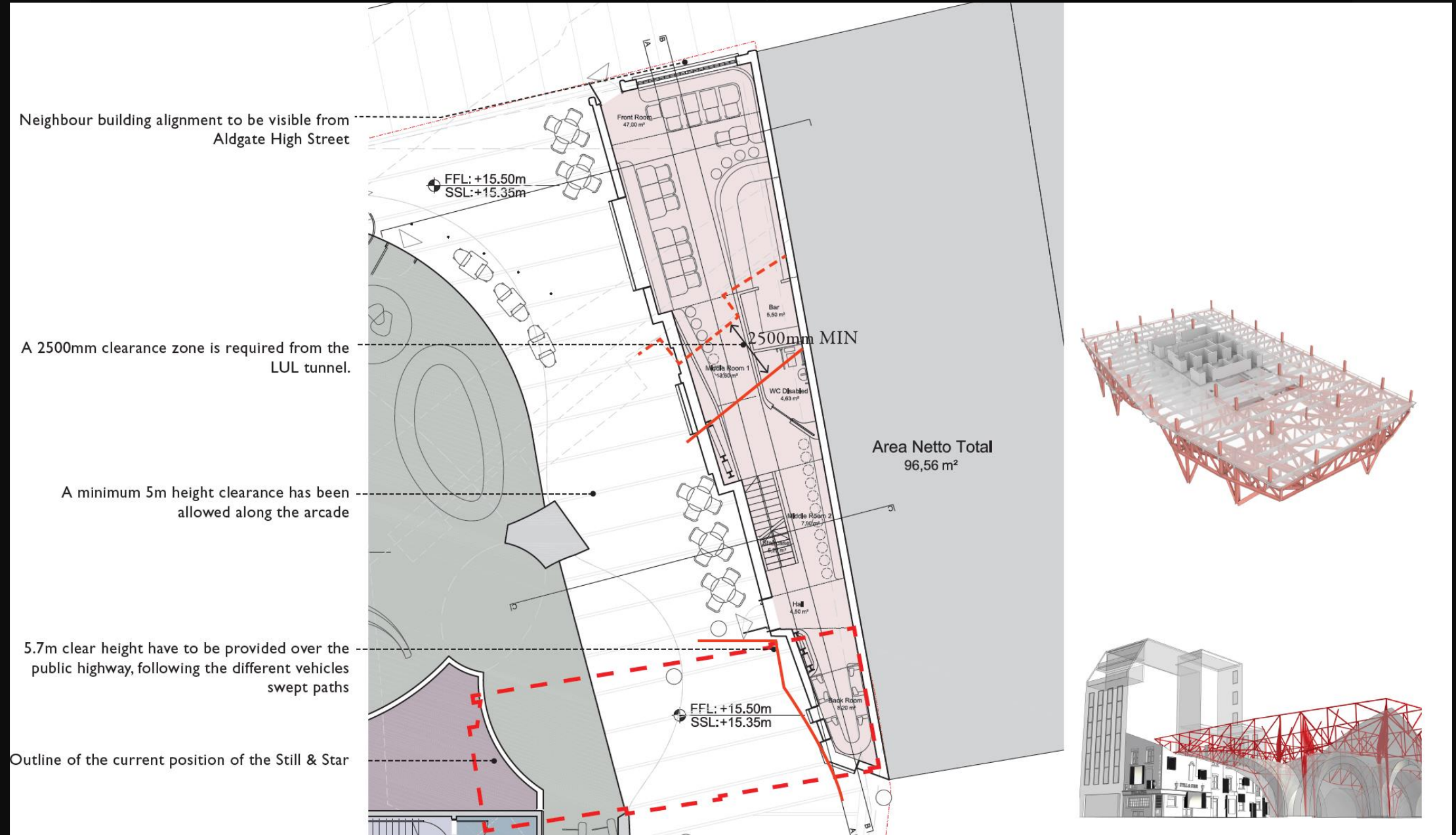


New Still & Star ground floor plan with public space marked in red

The new Still & Star relocation



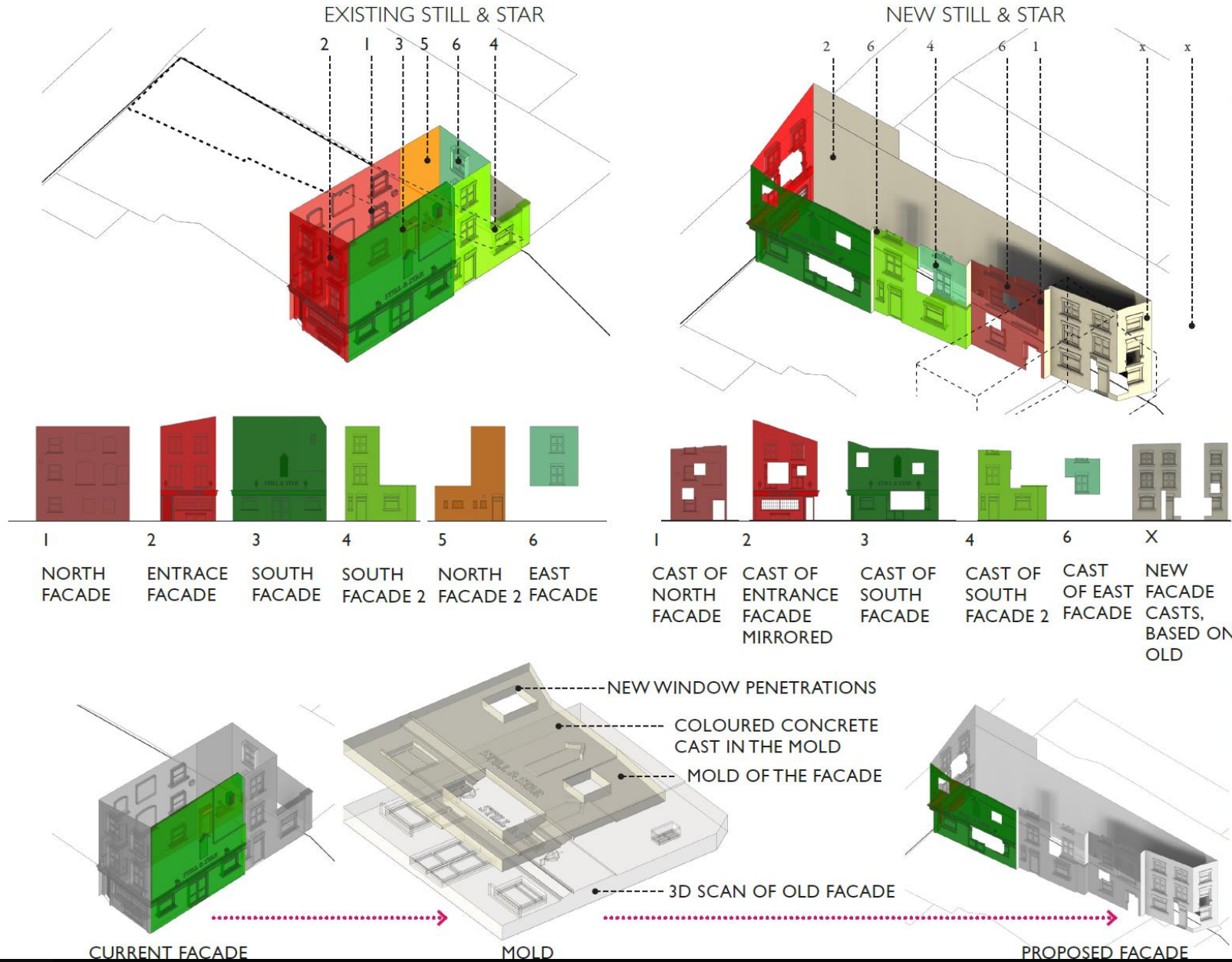
# 60 Aldgate High Street



The new Still & Star design constraints



# 60 Aldgate High Street



## MEMORY FACADE PRECEDENTS



*Hotel Barriere Fouquet - Edouard Francois*

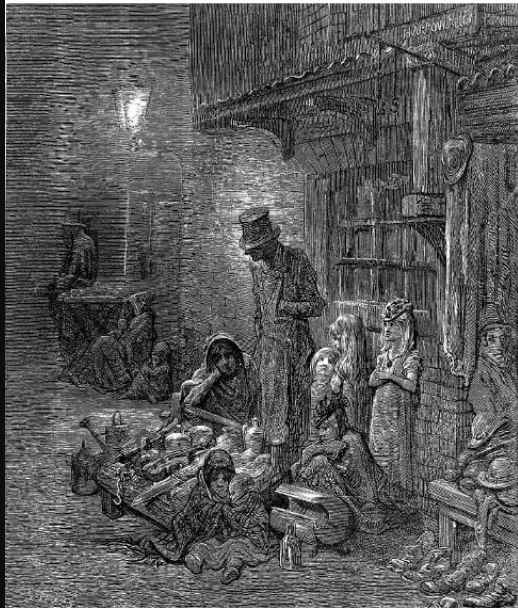


*168 Upper St. - London*

The new Still & Star casting



## 60 Aldgate High Street



The new Star & Still – Memory of Hallow Alley printed on concreted



# 60 Aldgate High Street



*Still & Star front window with visible glass, 1951*



*Still & Star front window with visible original green coloured glass, 2010*



*Still & Star front window 2017*

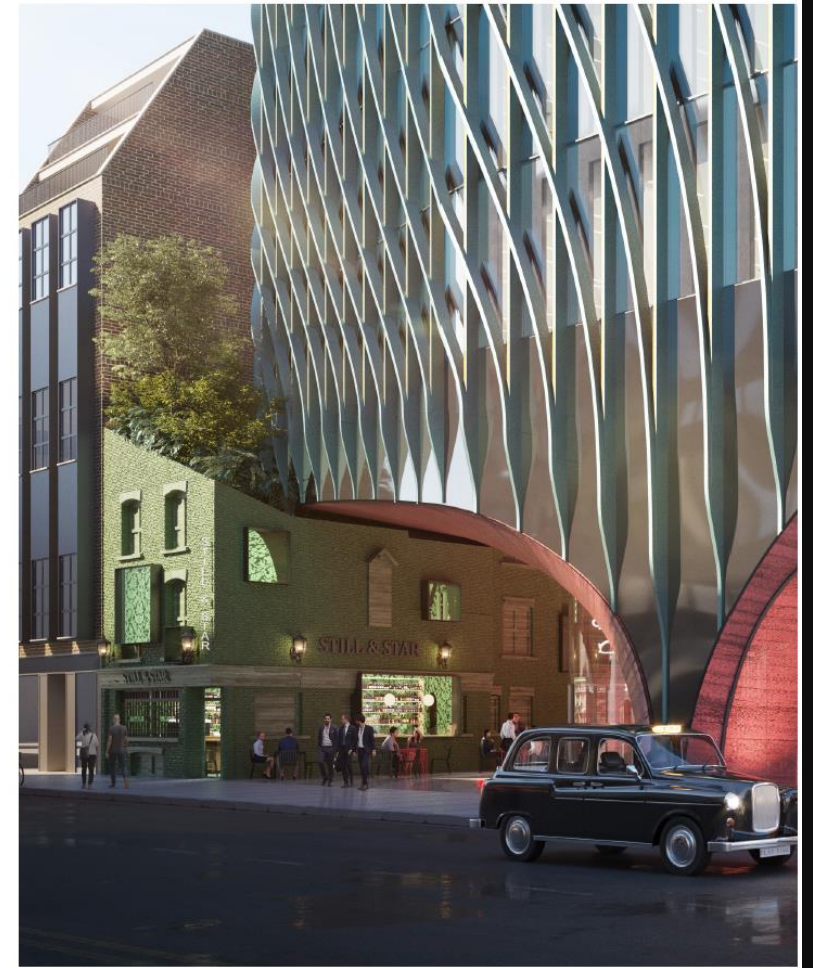
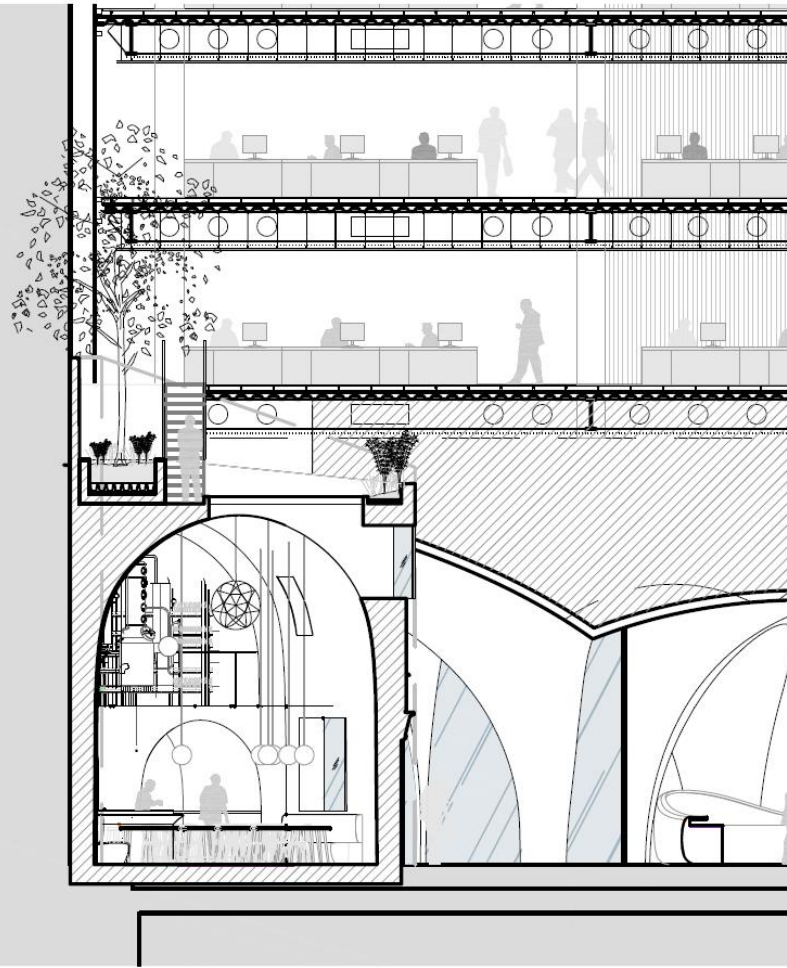


*Original Still & Star front window in new facade*

The new Star & Still public front window



# 60 Aldgate High Street



The new Still & Star office roof garden



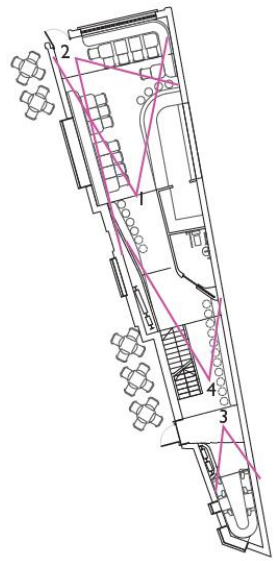
# 60 Aldgate High Street



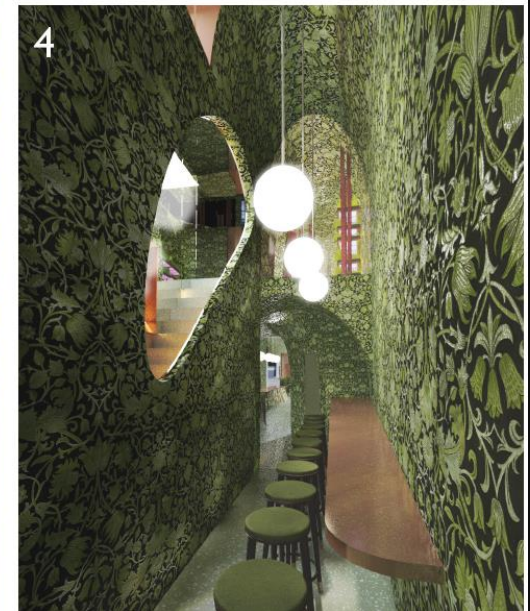
Still & Star Public House – layout comparison



# 60 Aldgate High Street



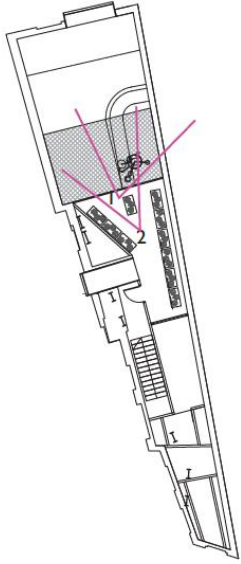
Ground floor



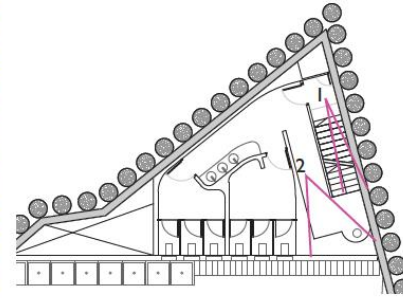
Still & Star Public House – Interior appearance GF



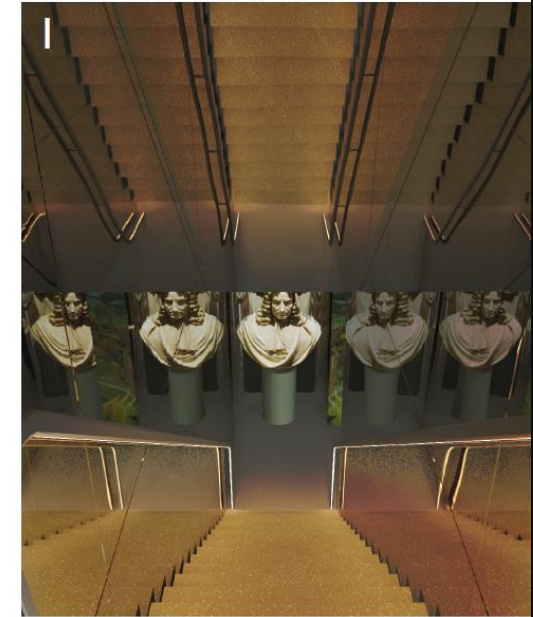
# 60 Aldgate High Street



level 1



basement



Still & Star Public House – Interior appearance L1 & B1



## 60 Aldgate High Street



View from Aldgate High Street looking south with Still & Star







# NEXT COMMITTEE

5 January 2021

